

Lux時間 Ranya

sunlight is not required

Lux



car 1



magic window



one of the last



"new technologies new possibilities"



left or right



bus 1



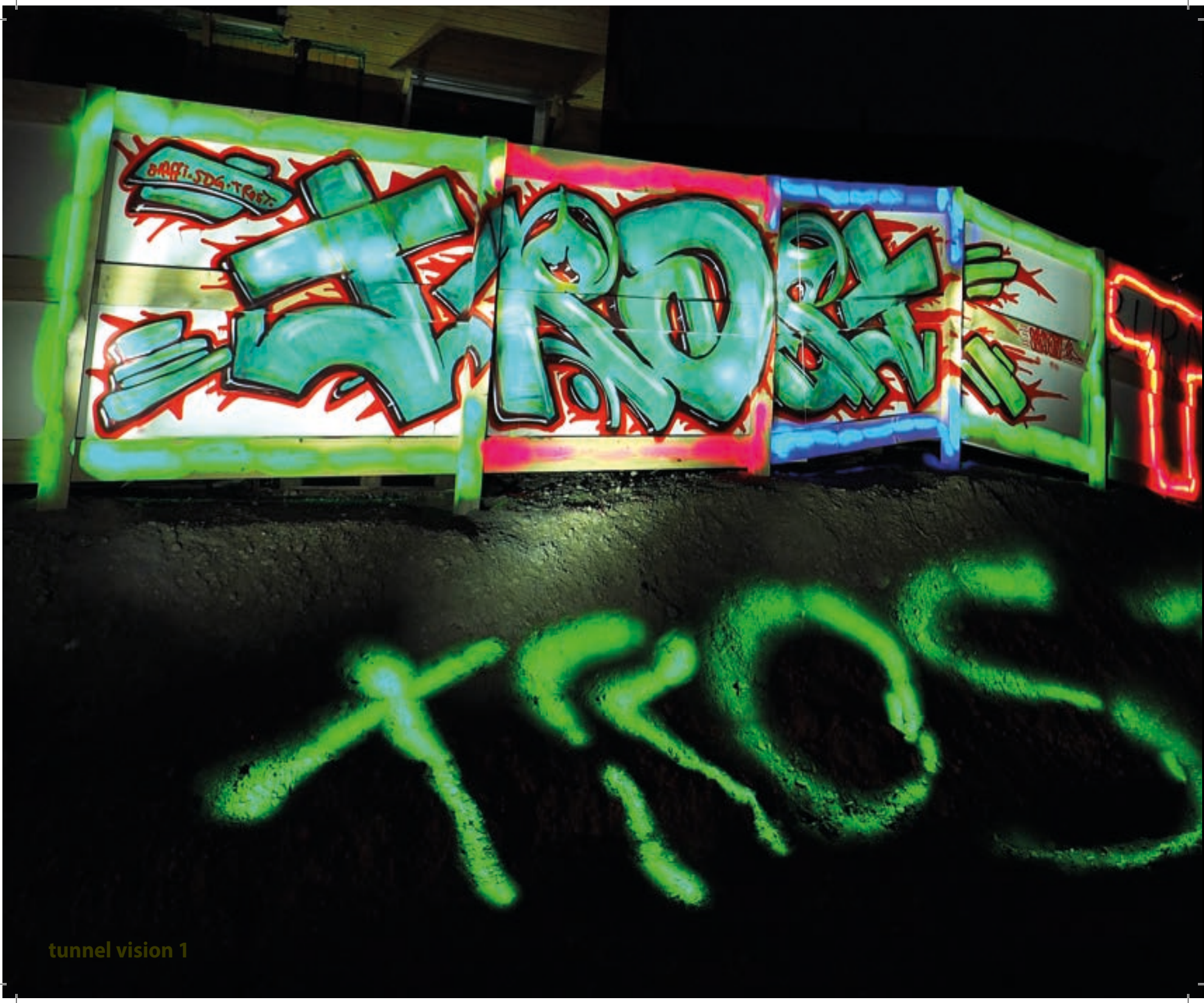
backjump 1



fountain 1



fountain 2



tunnel vision 1

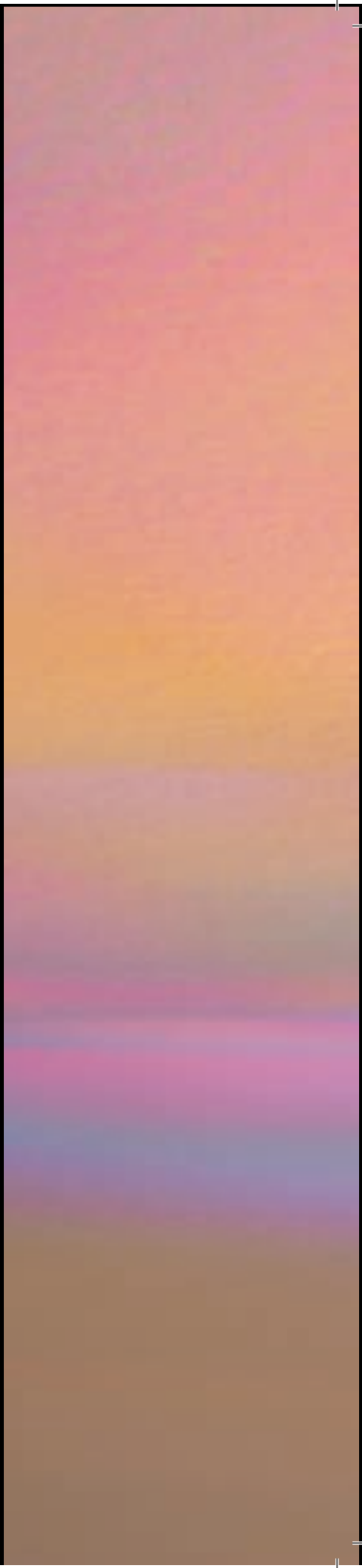




upside down



pastel lighterell







tunnel vision 2





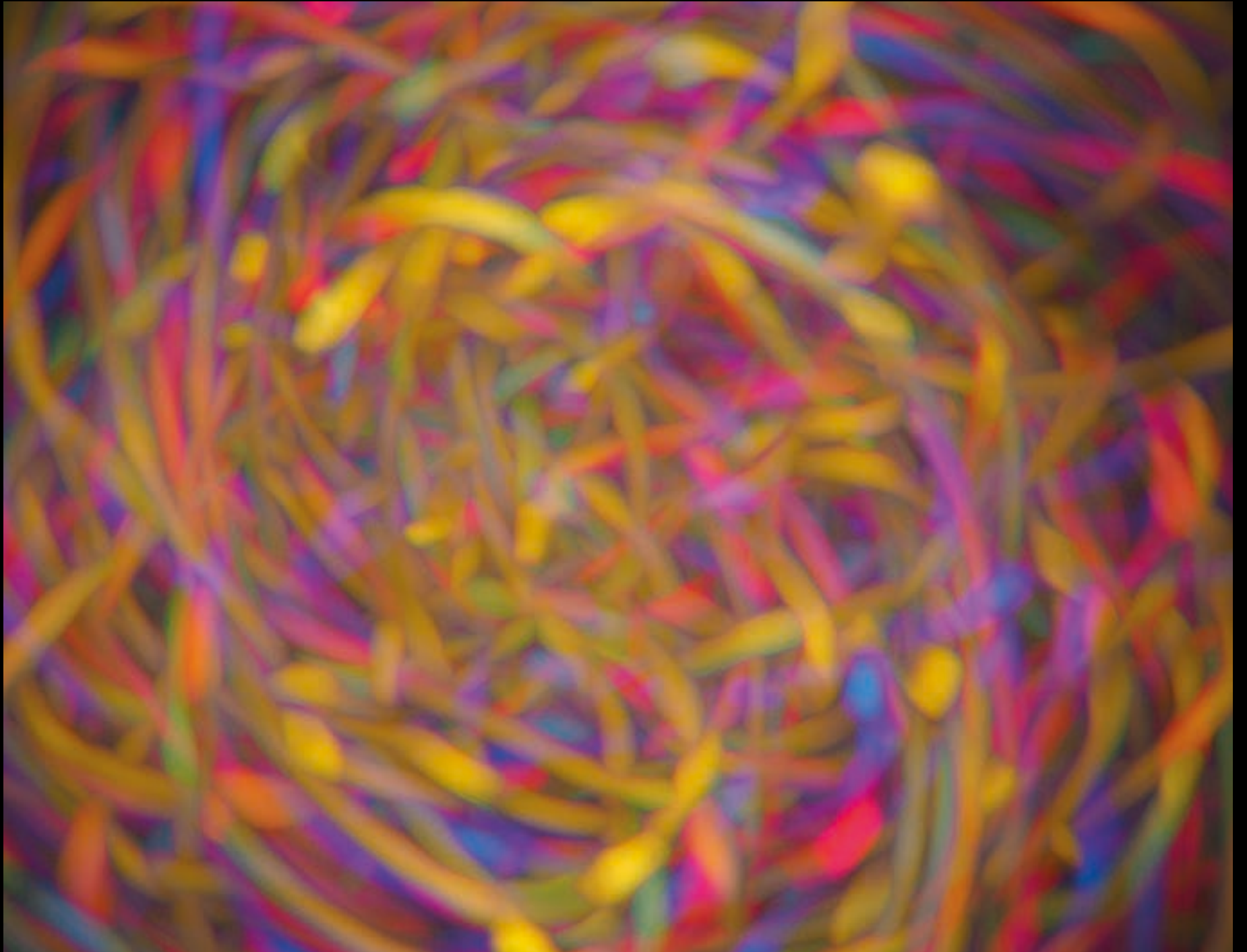
corde



coil



micro



macro



twister



tumbleweed



curve



strew



backjump 2





tunnel vision 3





under





TGV



already gone



Re 460



burn away



tracks



tracks zoom



freight 1



SOLUTIONS PAR PASSION

vigier

① Service
Télé 06 32 4
Fax 01 31
e-mail: logistiqu@vigier.ch

CH-3400 PÉRY
TEL: +41 78 445 83 80
FAX: +41 21 445 83 81
e-mail: logistiqu@vigier.ch



about 1.2km



bistro



TRUST

ಪಾಪಿಷ್ಠ



think positive

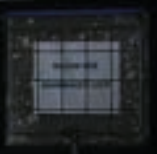


33 RIV
85 CH - VICEM
9326 276-3

	A	B ₁	B ₂	C ₁	C ₂	D ₁	D ₂
S	42.9	46.6	50.9	60.9	65.5	68.9	
120	00.0						

21040kg
22.0 t

Uacns
WAGON SPECIAL POUR CIMENT

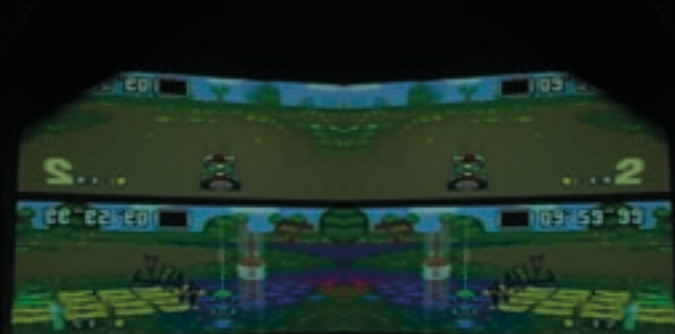




ultra fat



mirrored mirror



時間



1 time



2 times



3 times



4 times



噴水 3



fountain 4



環状交差点 1



roundabout 2

TROOST

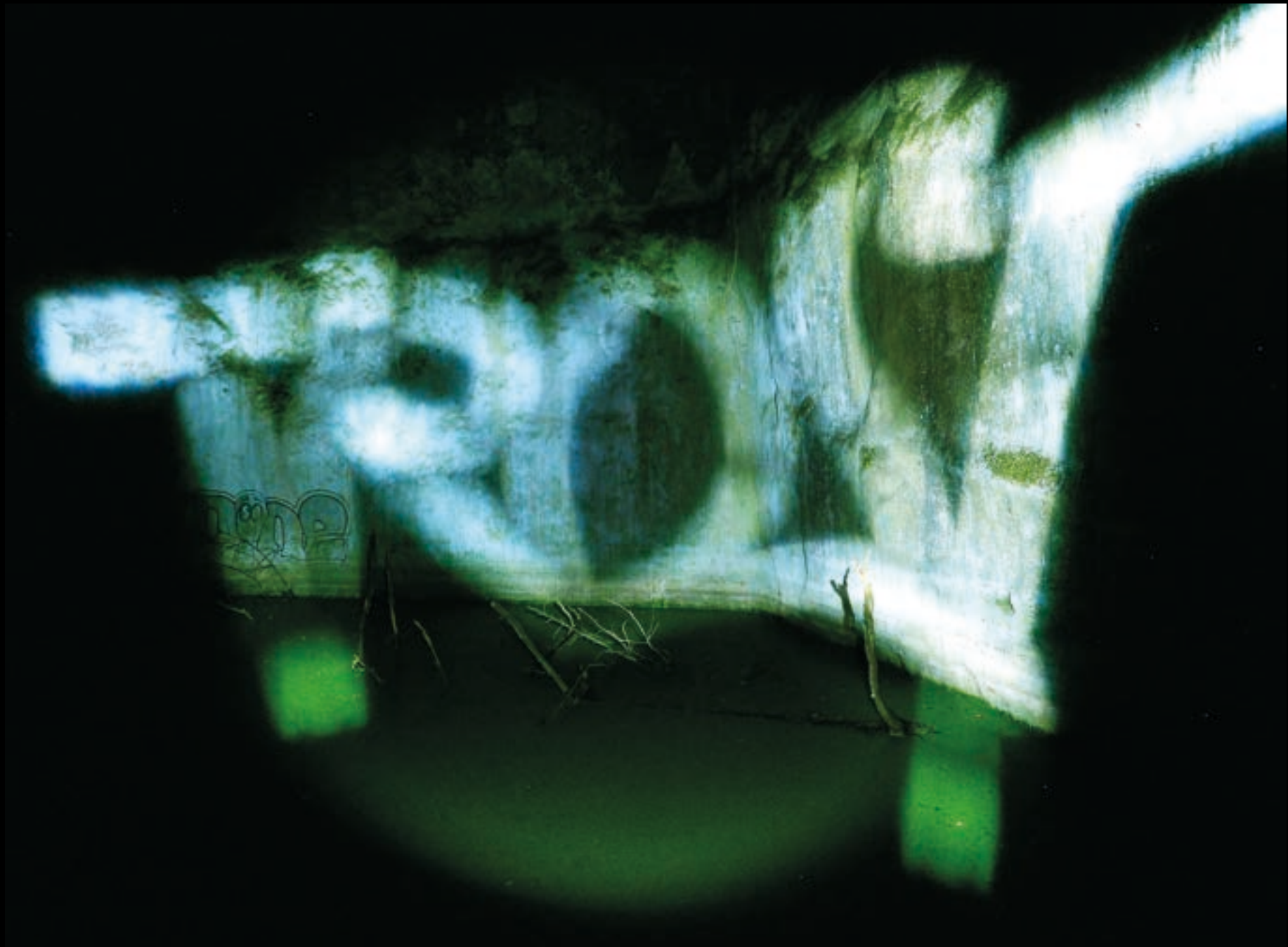




円



Étienne-Jules Marey



採石場



me



self

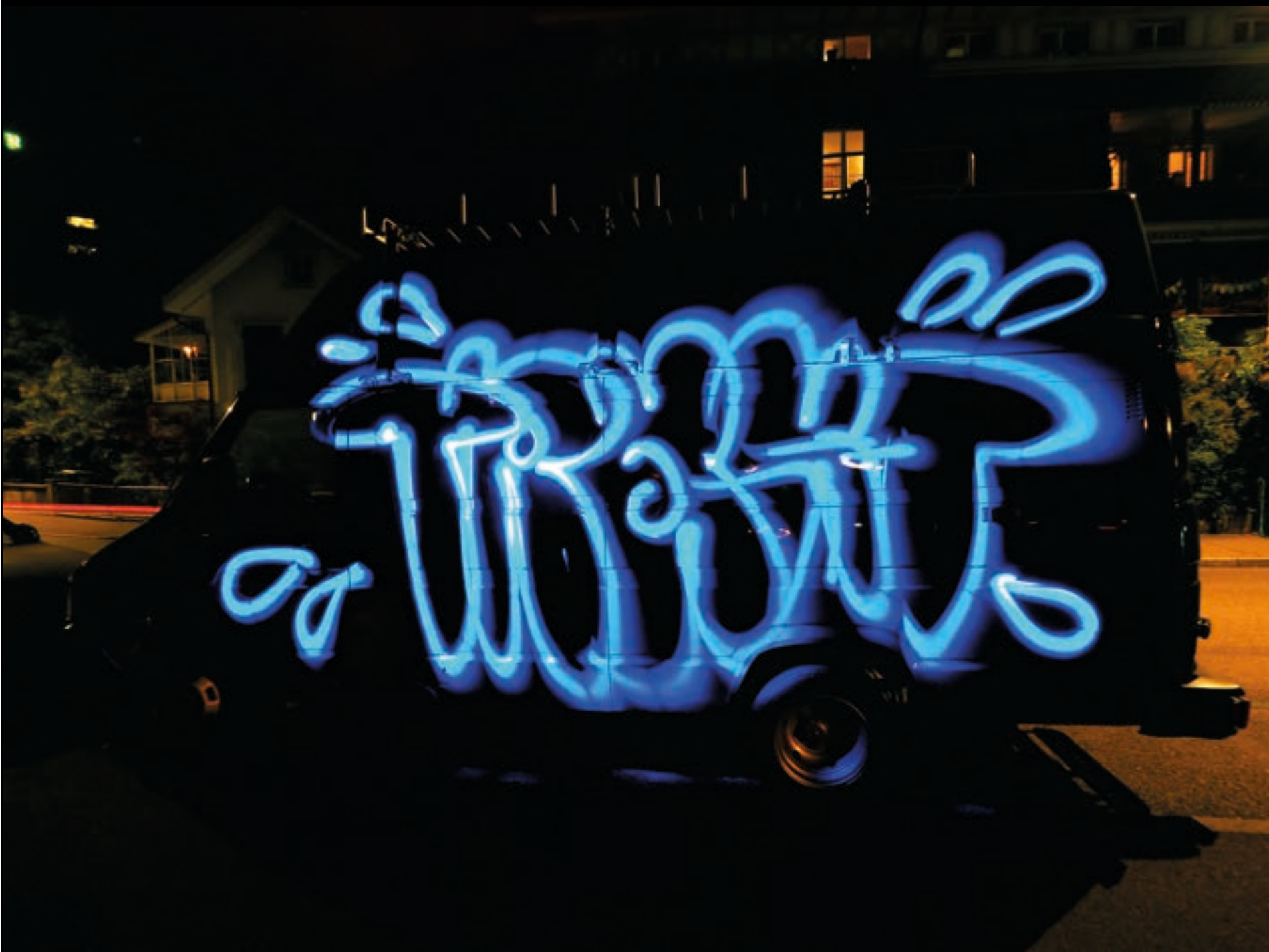


reflection



unknown artist





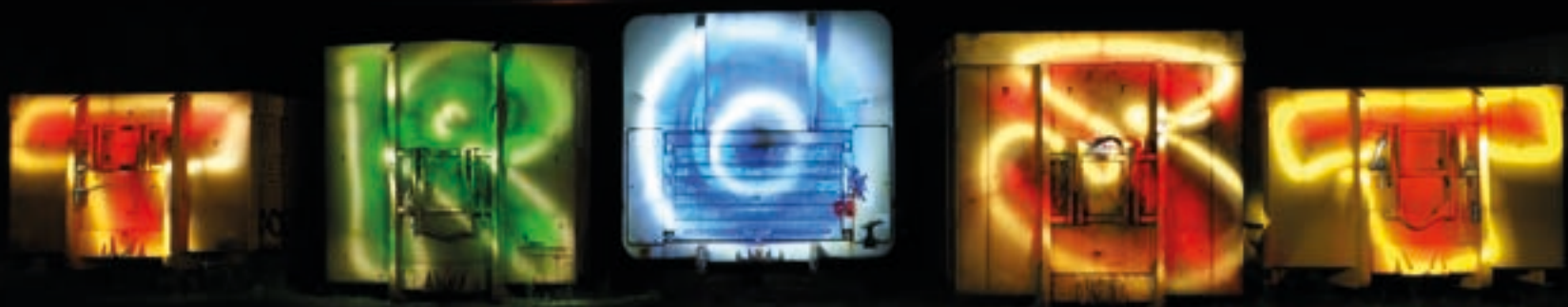
パネルトラック1



パネルトラック2



highlights







AERISK

keep moving



一方通行



出口



turntable



siding



貨物駅



木材輸送



31 RIV
85 CH-BHOC
472 3 156-0 Depo



eat currywurst

IP
005
85 SBB-CFF
33 3058
000 005-8

Eigentümer:
ACTS AG
3001 Bern
Helmstrasse
Bern

Tara 3500 kg
Nutzlast Sips 22 t
Sips 17,7 t
Brutto Sips 16,5 t
Sips 21,0 t
Volumen 30 m³

CFF Nr. 167

Capacité de charge utile (kg)

29 000 kg

23t

Coût 010
(Coben CSW)

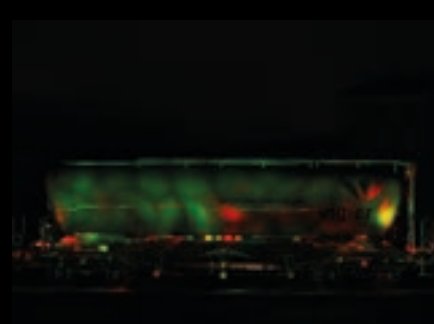
★ ★

A	B	C
S	34.0t	42.0t/50.0t

Version 0-0P-A
10.3.10

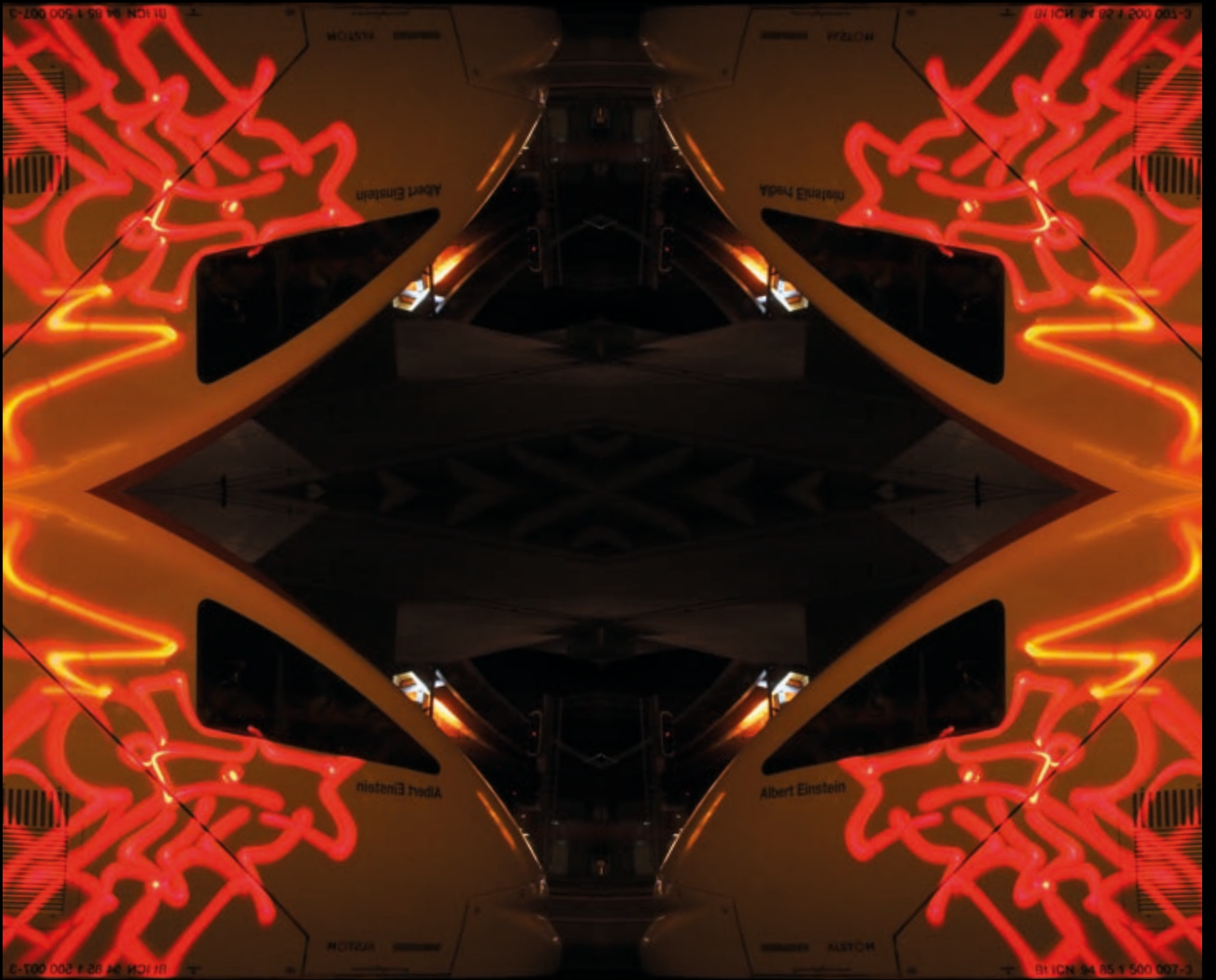






colors



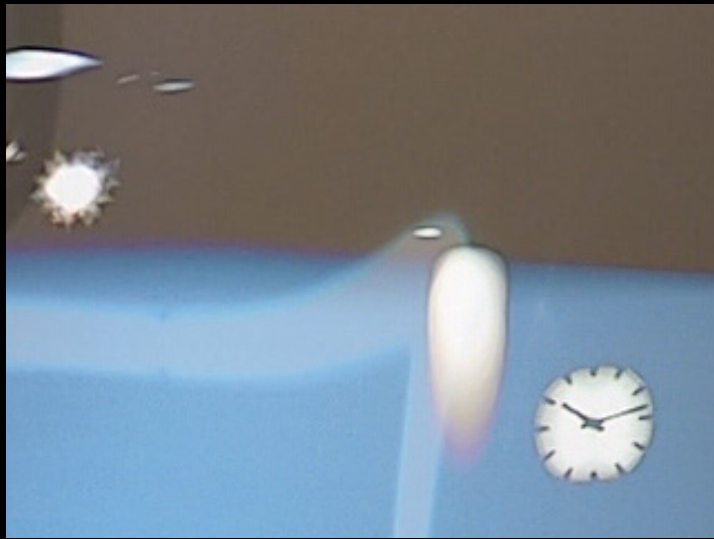




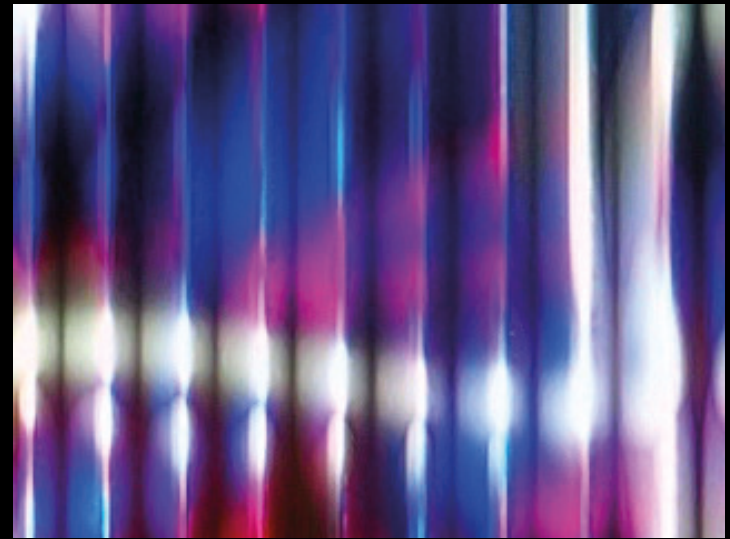
bright io







Der Kurs ist vorherbestimmt



花



line



form

BOH

centrique

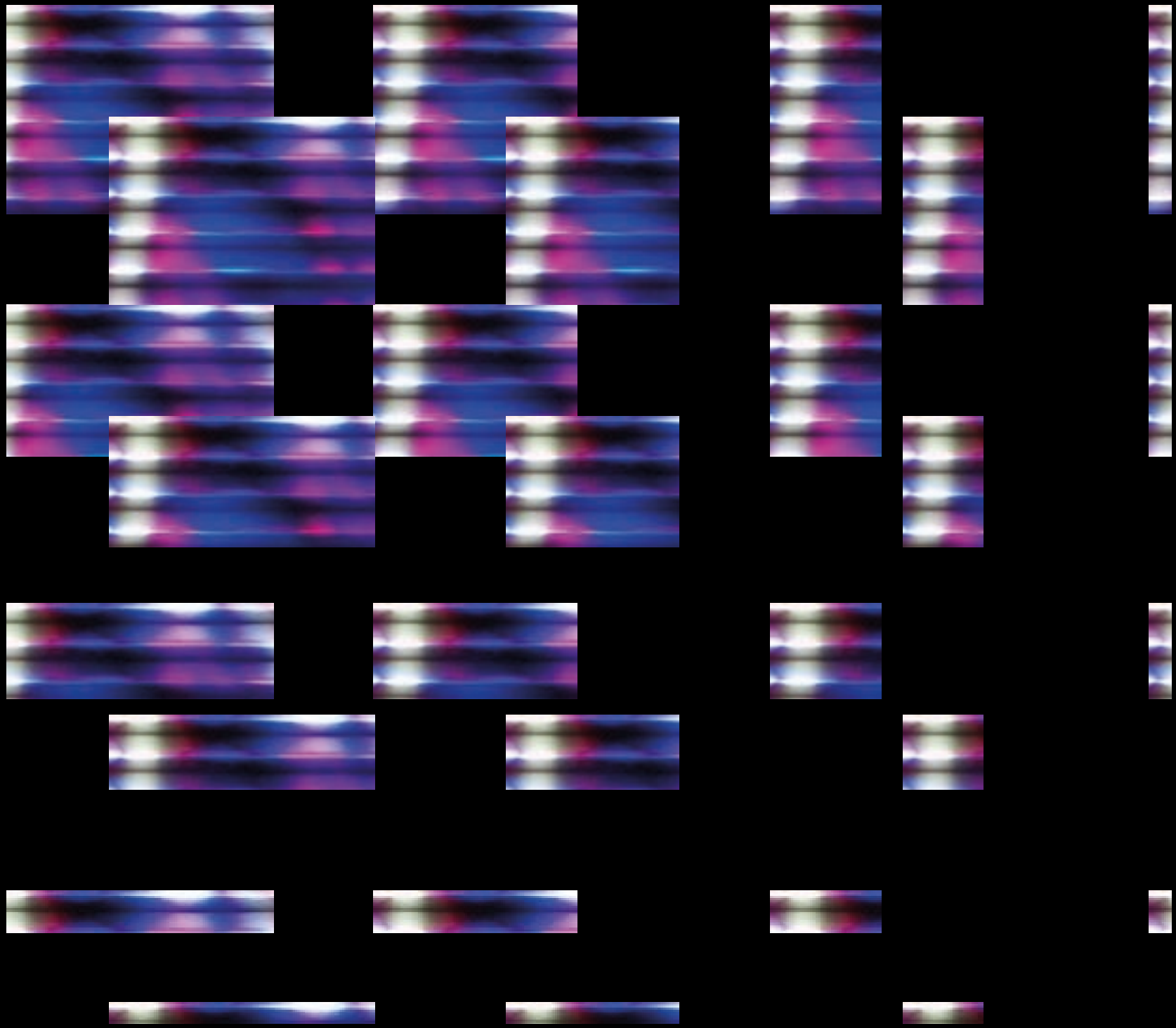
1L

C 11

C 12

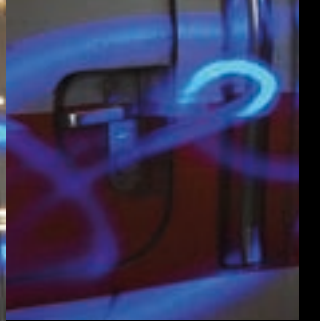






鋼カラフル





世界への扉



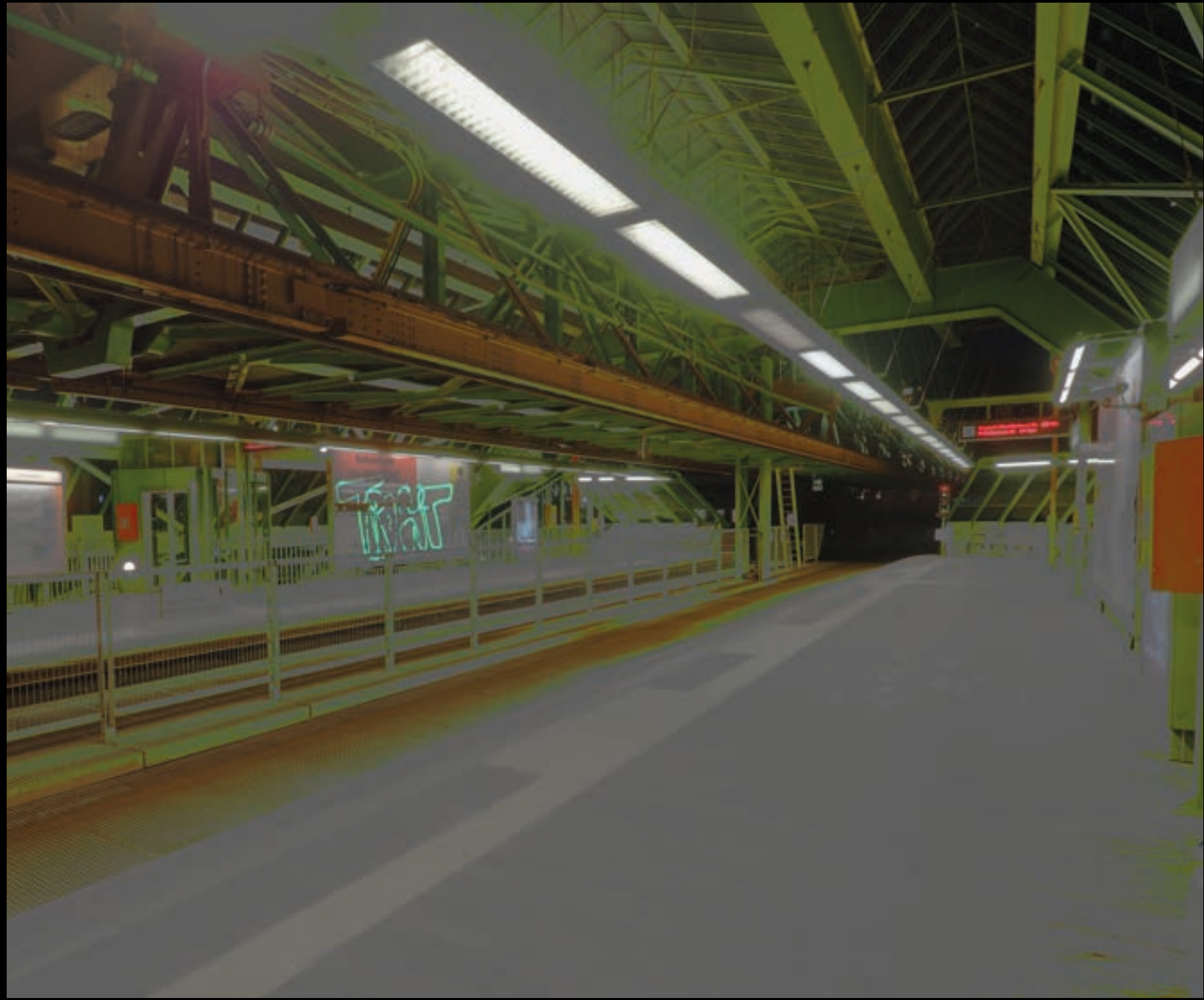




redy









feel free





„a video summarized in a photo“

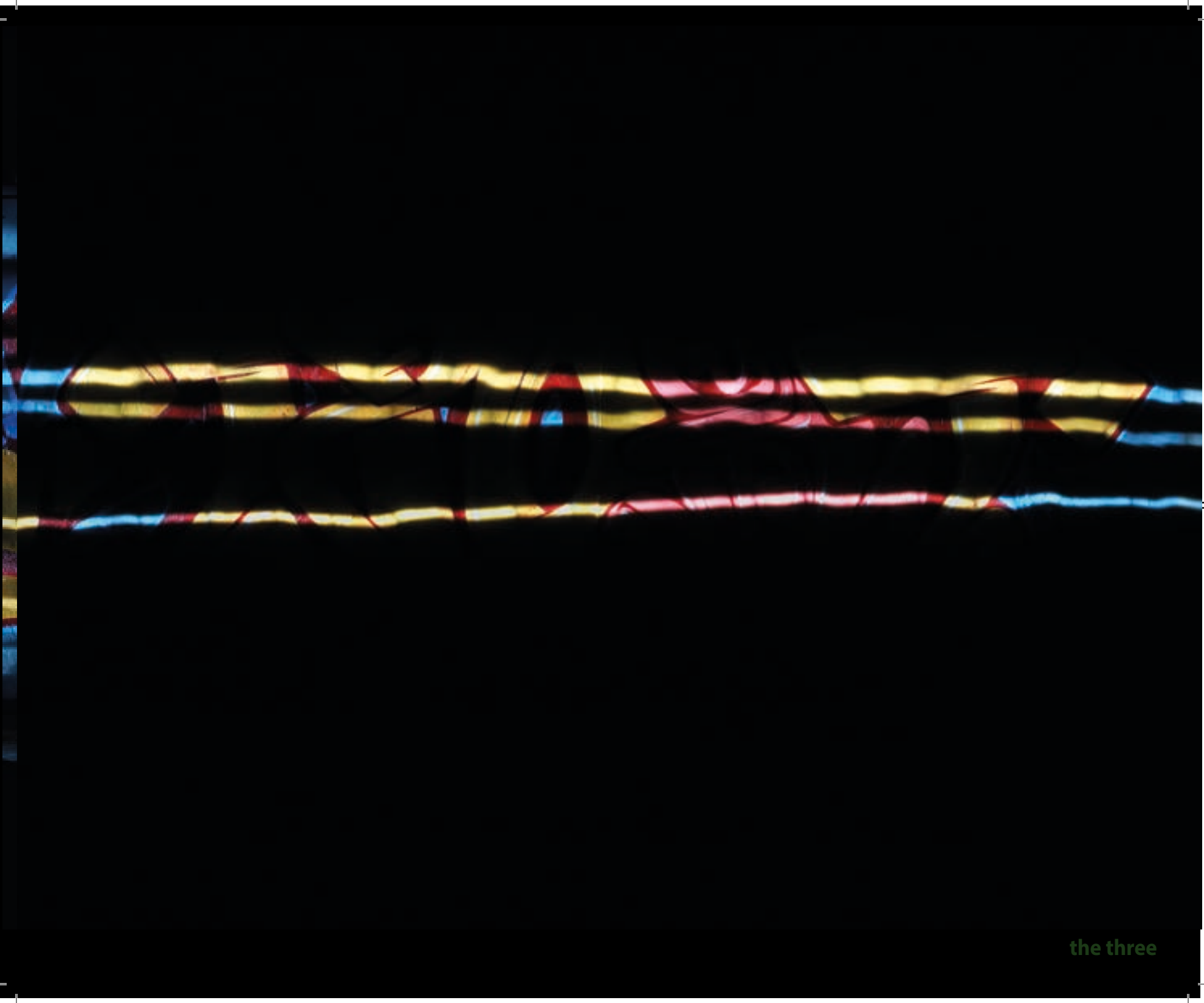
バス停







水平に



the three



alone



not

TRIBE

こんにちは



Муля



bern



expanse 1





voilà



architektur



second floor

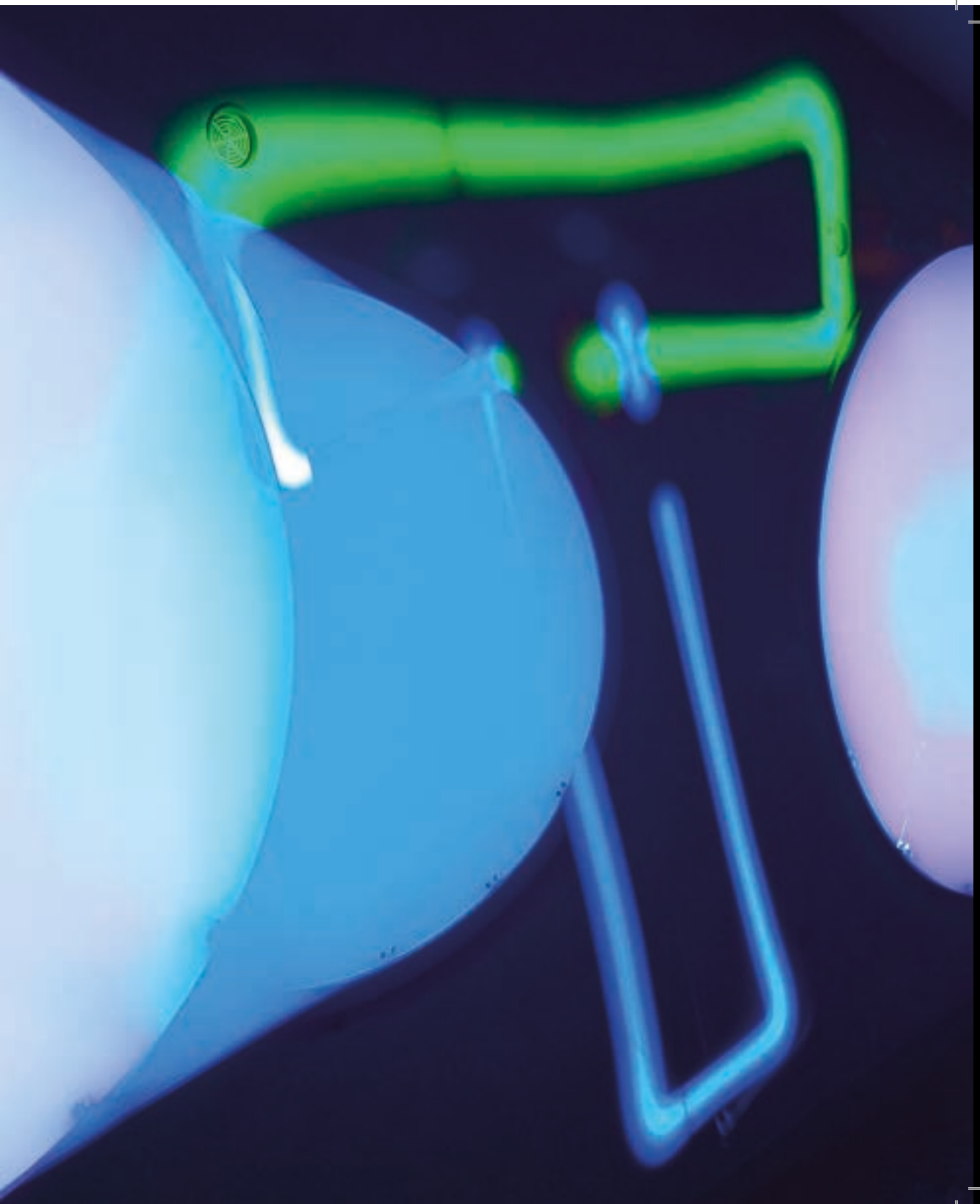




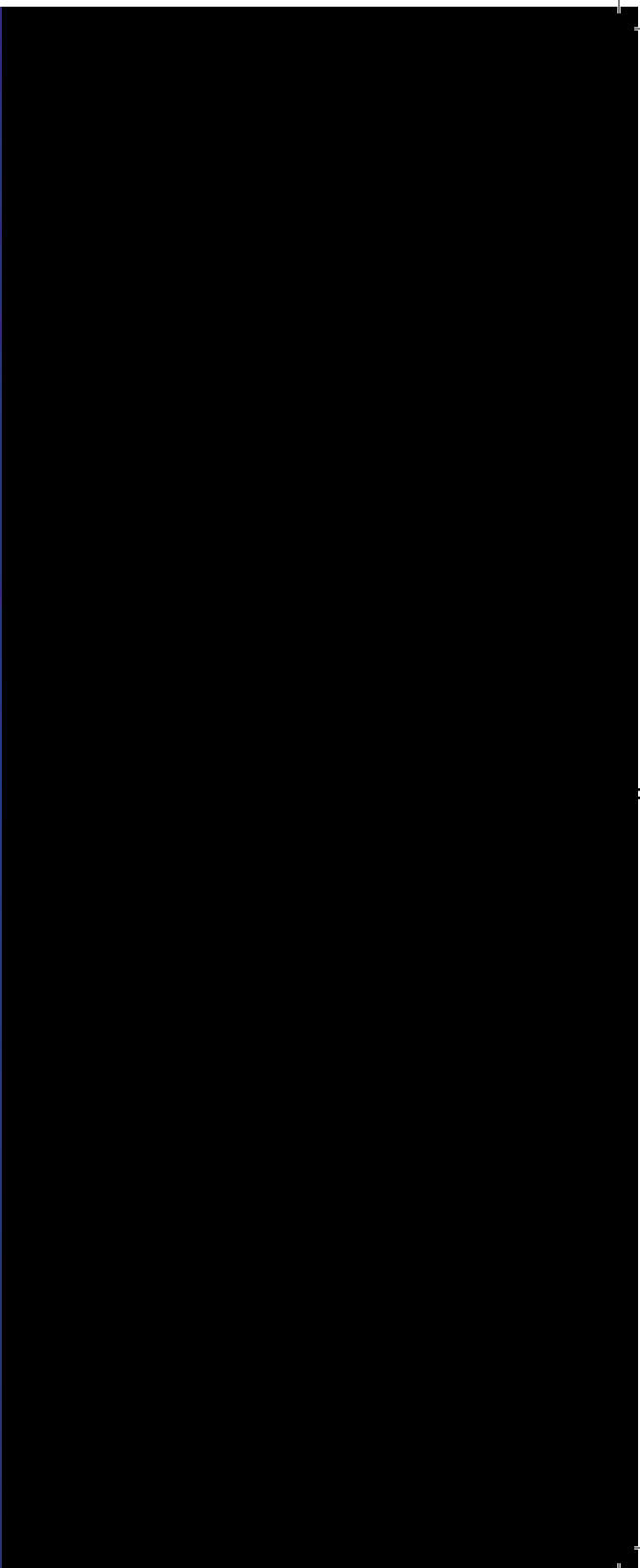
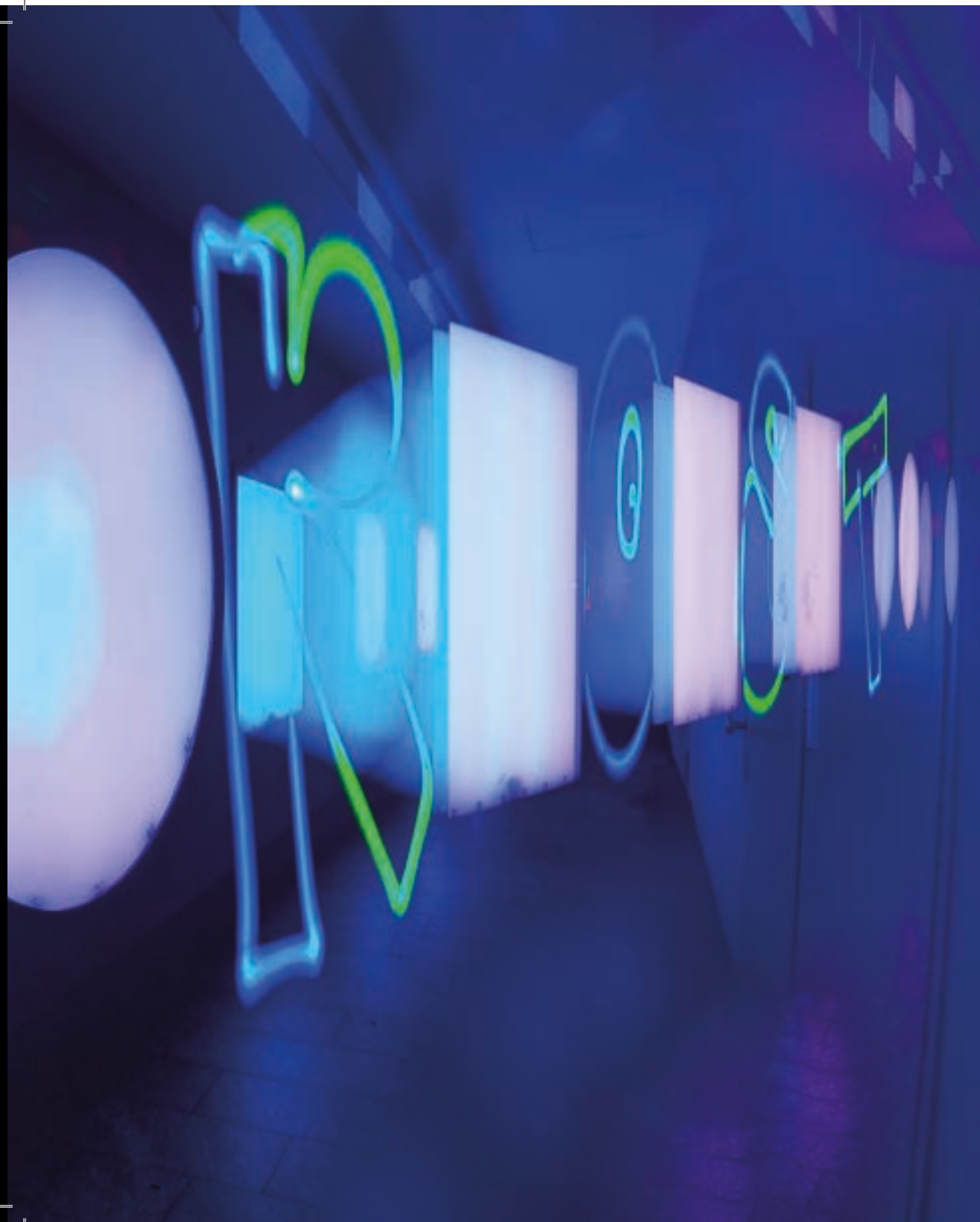


shifting





through the space







can you see the beat

TIPRO

grotesk



The word "TROST" is rendered in large, bold, 3D block letters. The letters are primarily white with a bright, glowing outline. The interior of the letters is filled with a vibrant, multi-colored pattern of blue, green, and purple. The word is set against a dark, textured background that resembles a night sky or a dark, reflective surface. The overall lighting is dramatic, with the glowing letters casting a soft glow on the surrounding environment.

TROST

always brighter



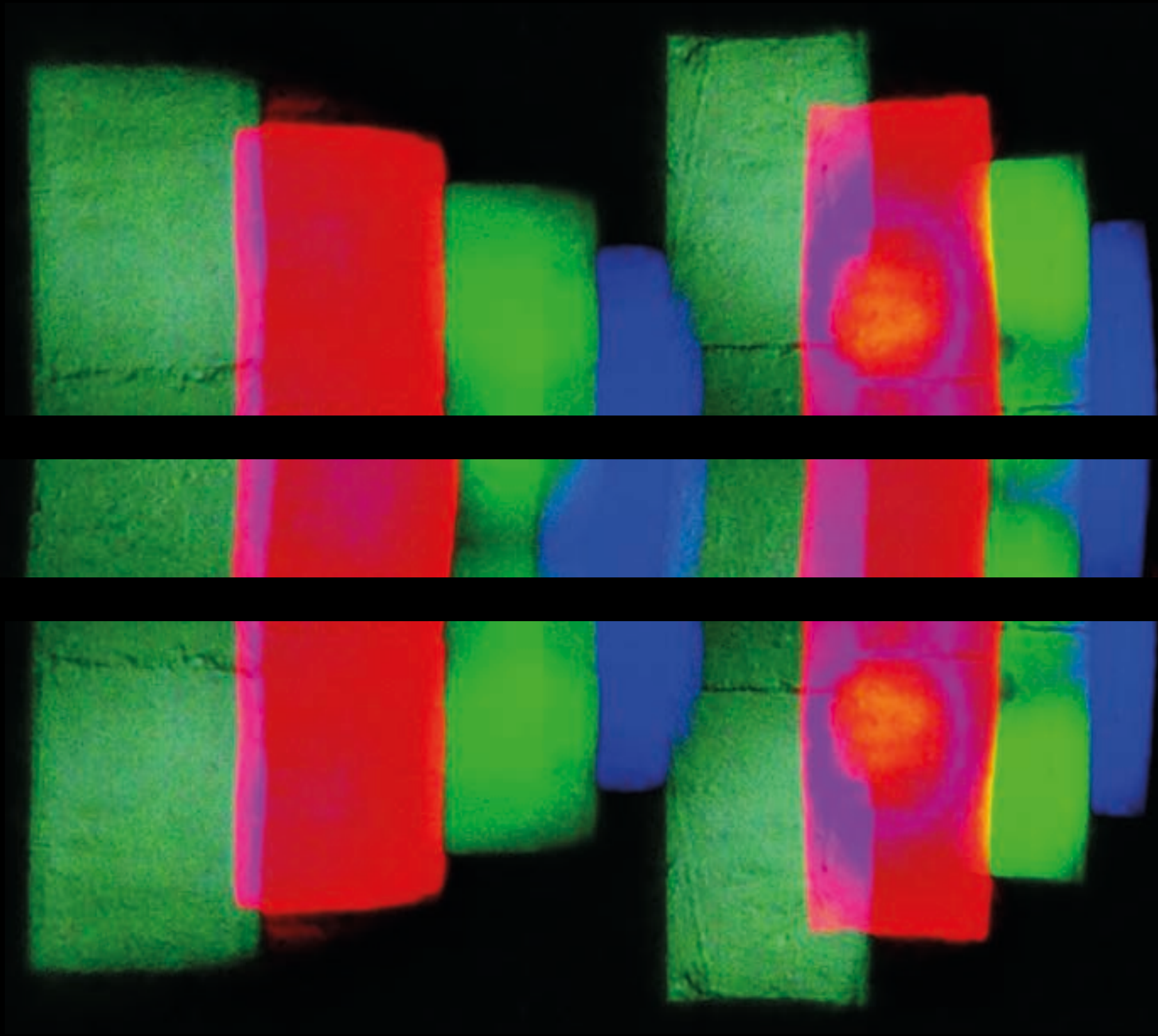
TIROST

only the brightest

T TROST T

silver

TIPROST



TROST

4*



zwirbel



TIROST

FROST



steradiant



tunnel vision 3





blauersand



nachtschattengewächs



fallen



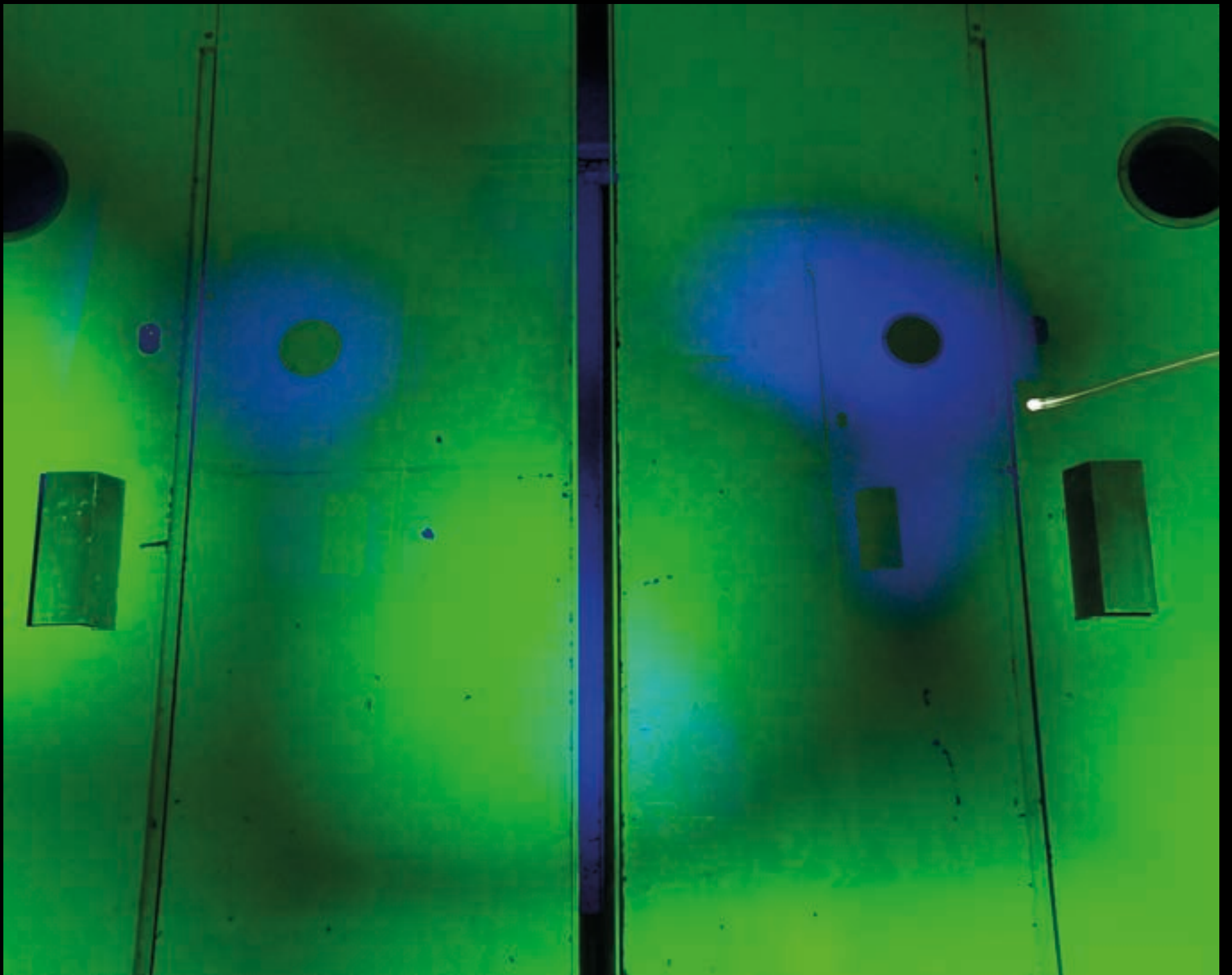
ineinandergreifend



yo



Chrigu



lift



chalet

"man kann mich nicht kopieren, weil ich kein Original bin...jeder Vater ist auch ein Sohn"

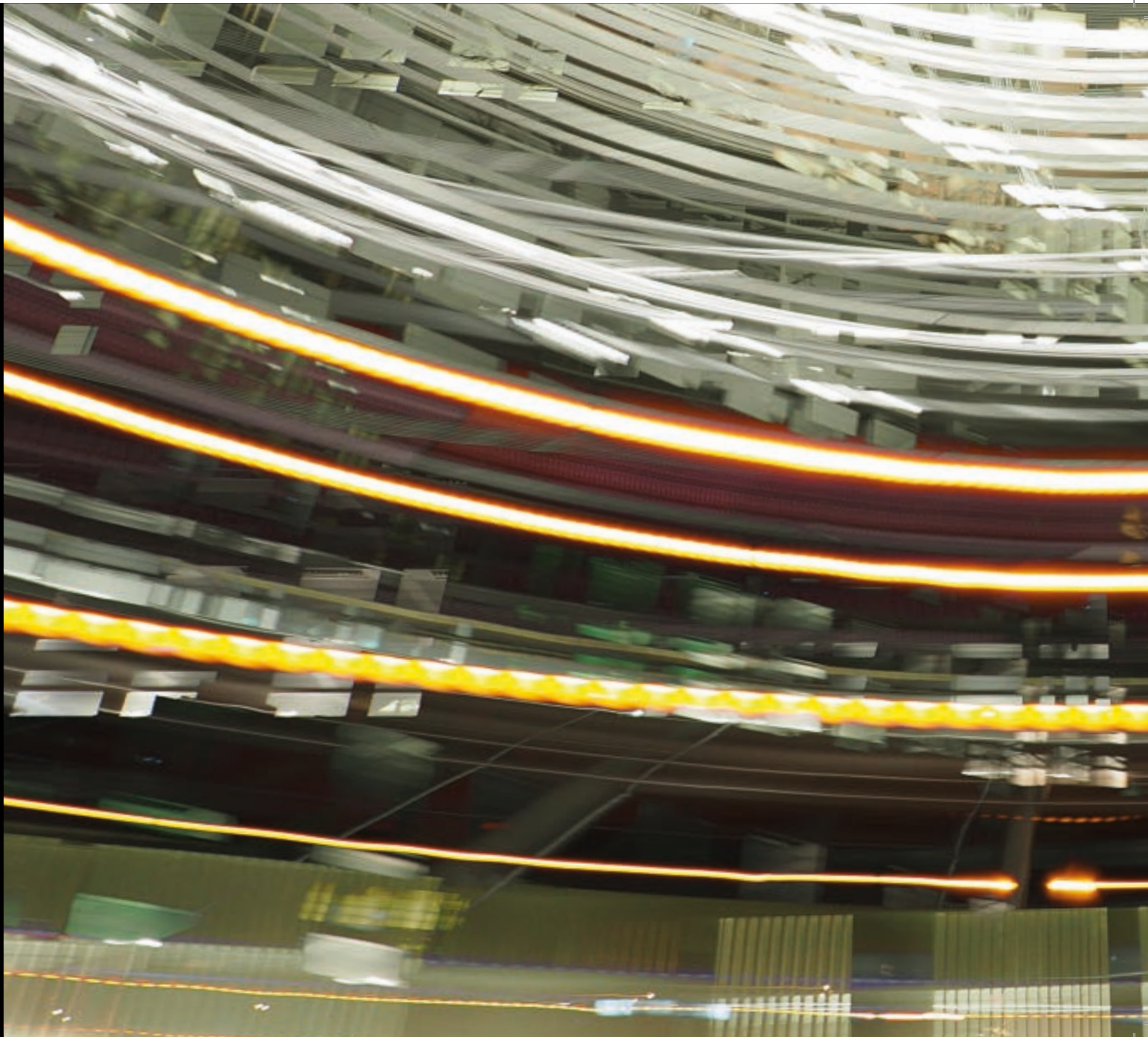
deutscher Raper

„you can't copy me because I'm not an original...every father is also son"



street



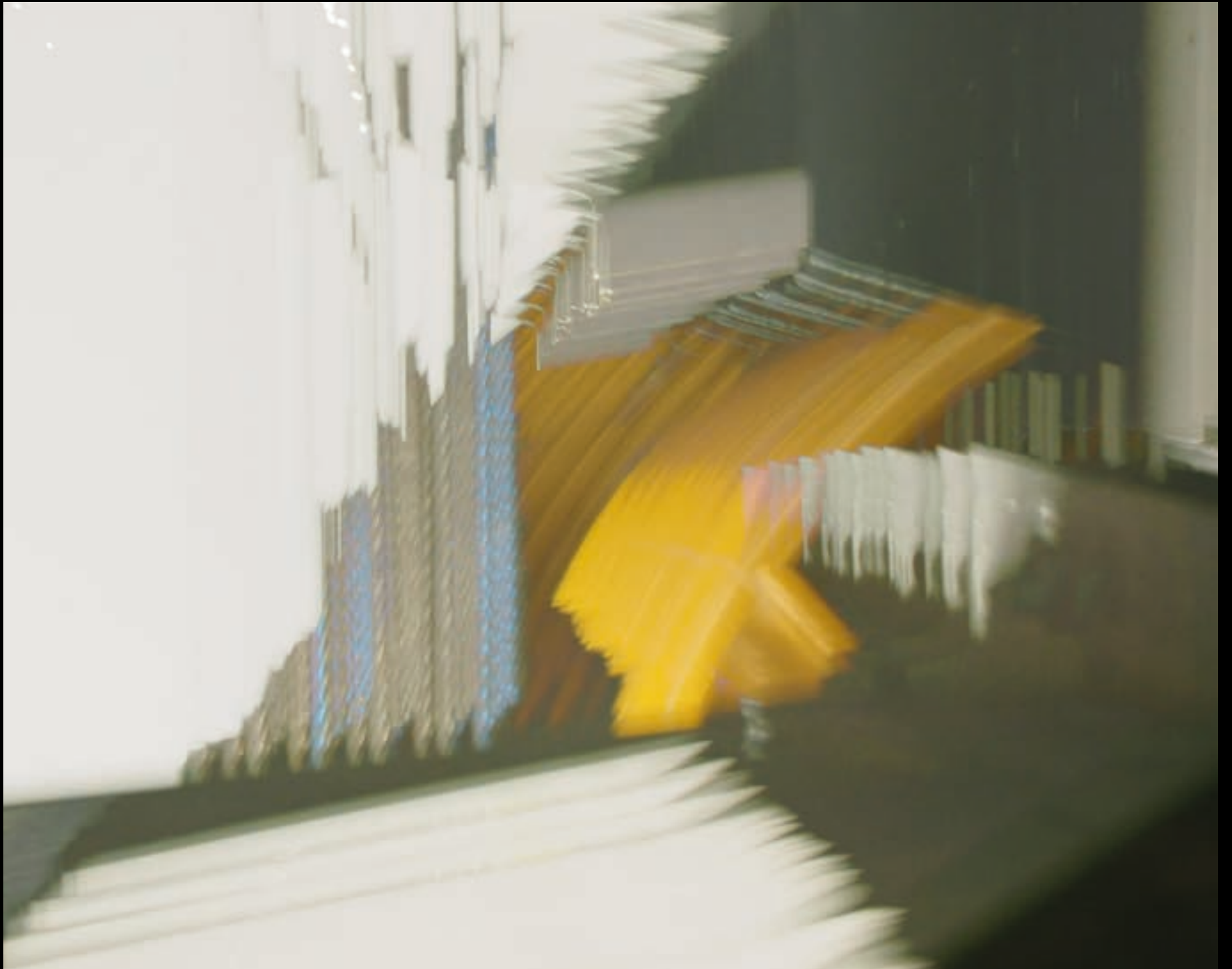






radius 2





expanse 2





säulen



brennweite



free hugs













jungs von den Treppen



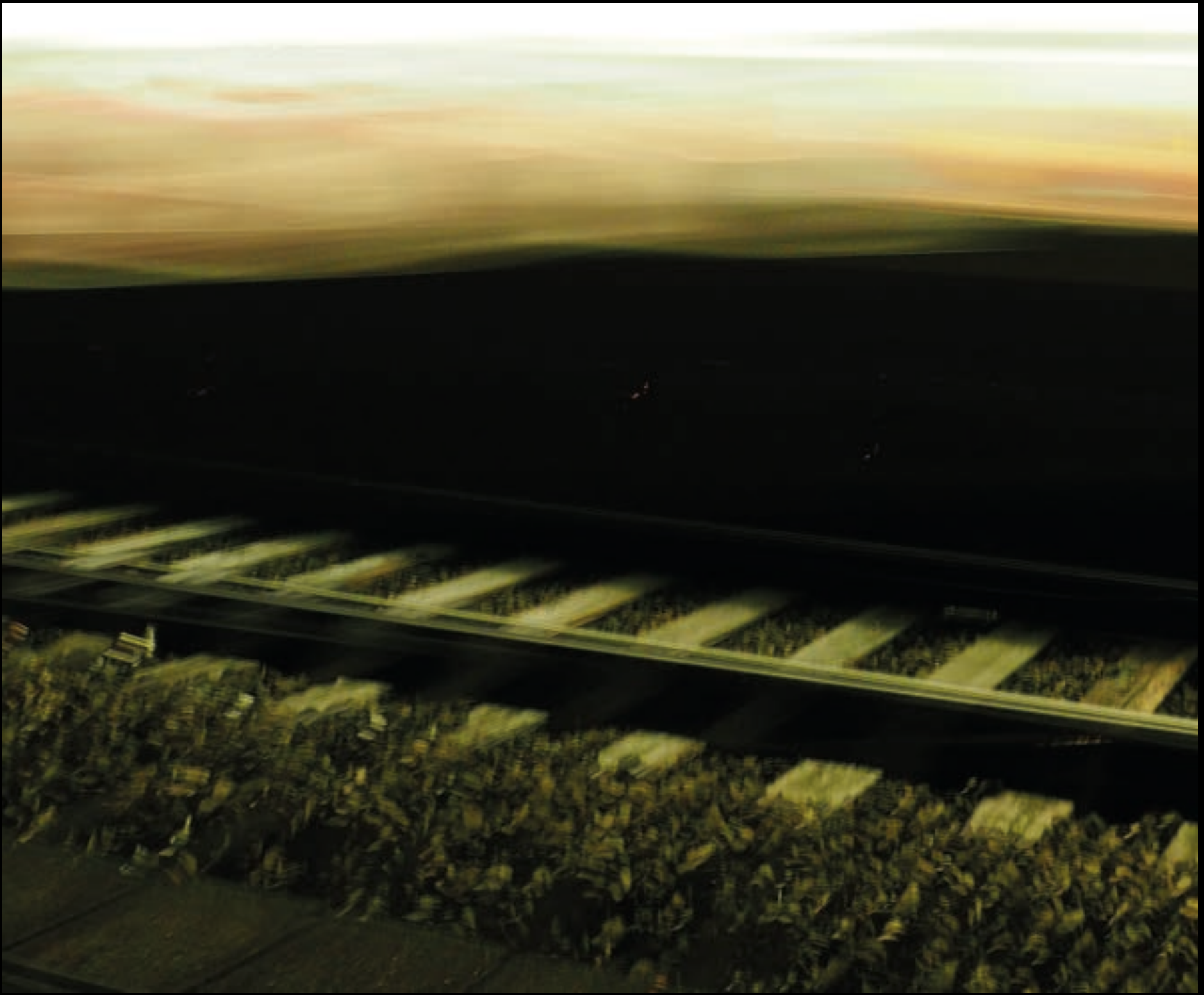
expanse 3



expanse 4







a train long







outwards

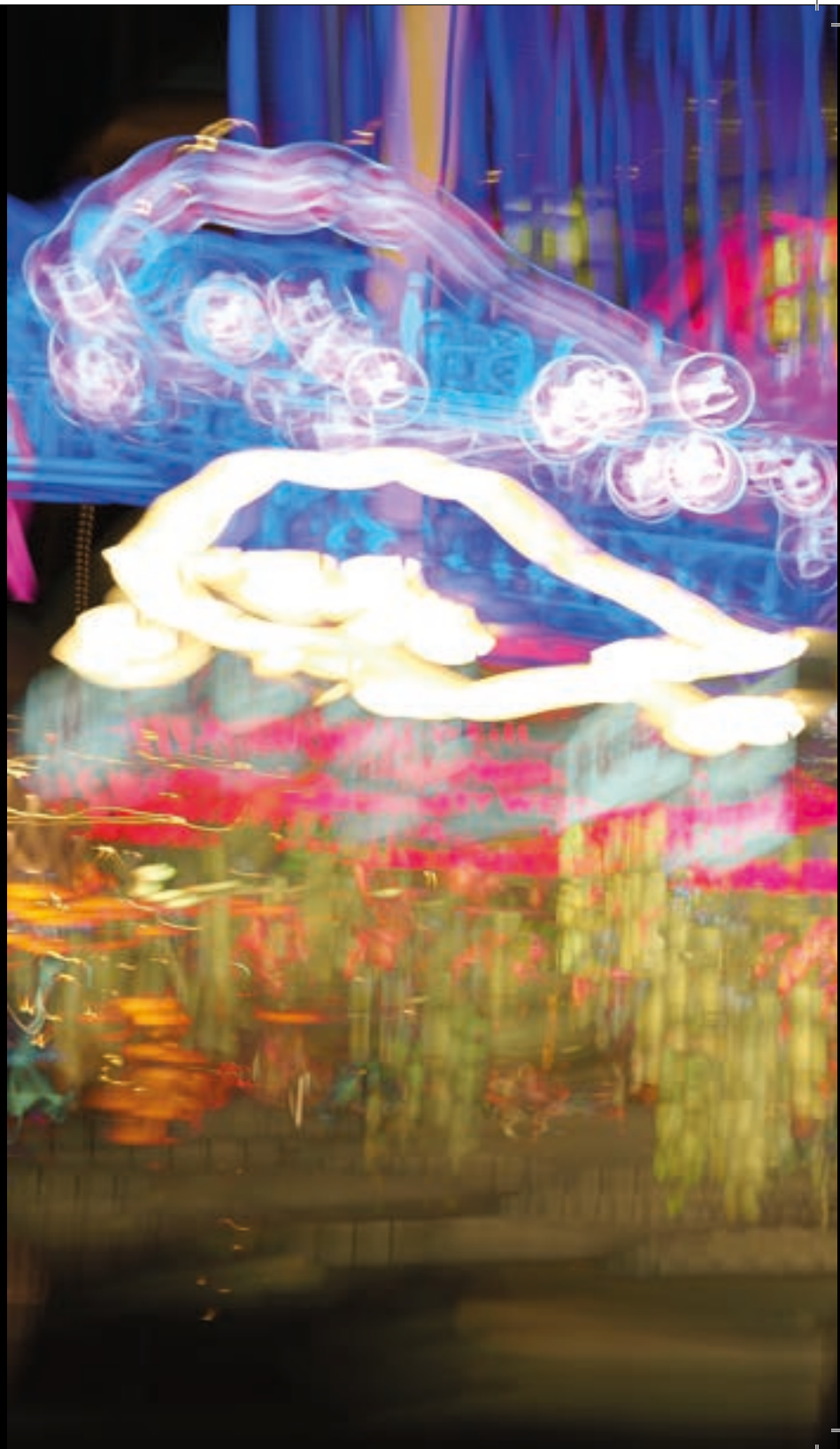


zoom fern



zoom nah

rush hour

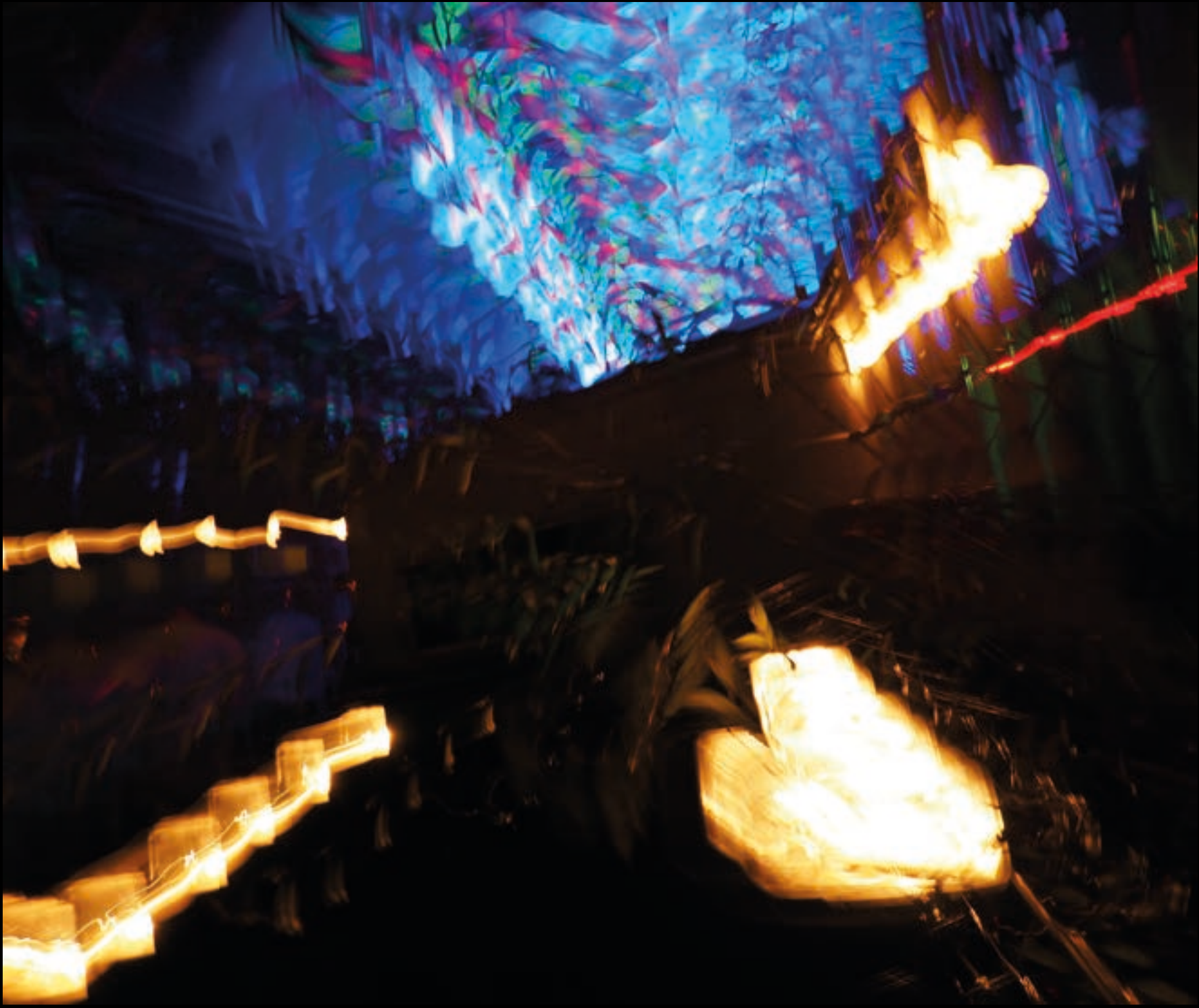


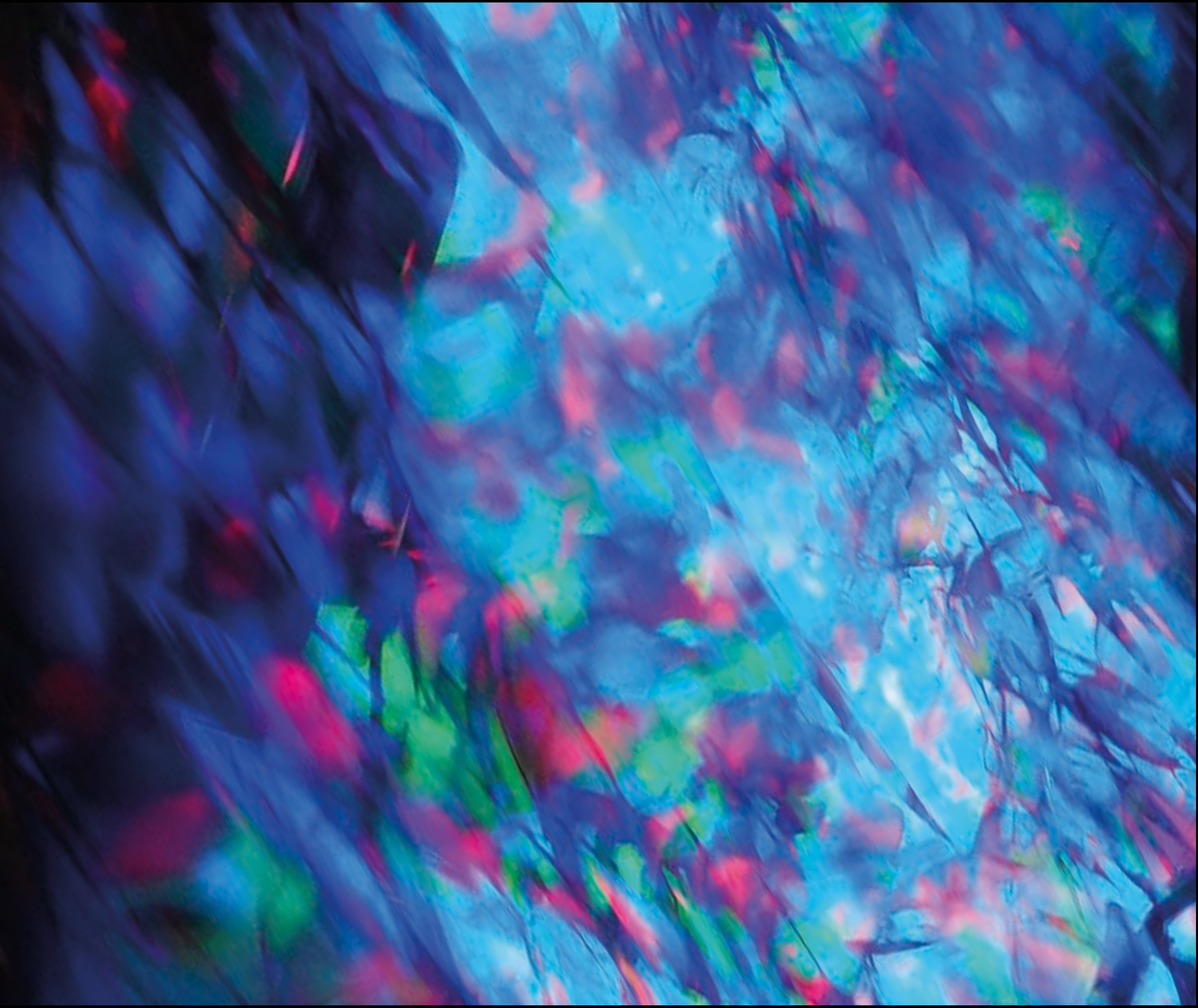




points and lines











hall of fame

T

Thanks to the seller who sold the omd e m5 to me.

**It was too dark
to take a picture so I tested the long exposure mode..**



Live Time mode, aperture F/6.3, exposure time 20sec



LT, aperture F/6.3, exposure time 5sec



LT, aperture F/22, exposure time 25sec, light on object



Life Composite mode, aperture F/6.3, shutter speed 0.5sec per image and only the things brighter than the first image from the photo, light on object, x = 1 image



LC, aperture F/3.5, exposure time 0.5sec*x, light on object



LC, aperture F/3.6, exposure time 0.5sec*x, light on object and direction camera (there you can see the x)



1lighter lux*x





light reflections



entrance angle equal to exit angle



colorfully by light



much light on wall



three times green



more obstructed view than shadow



no light, no lux





exit angle



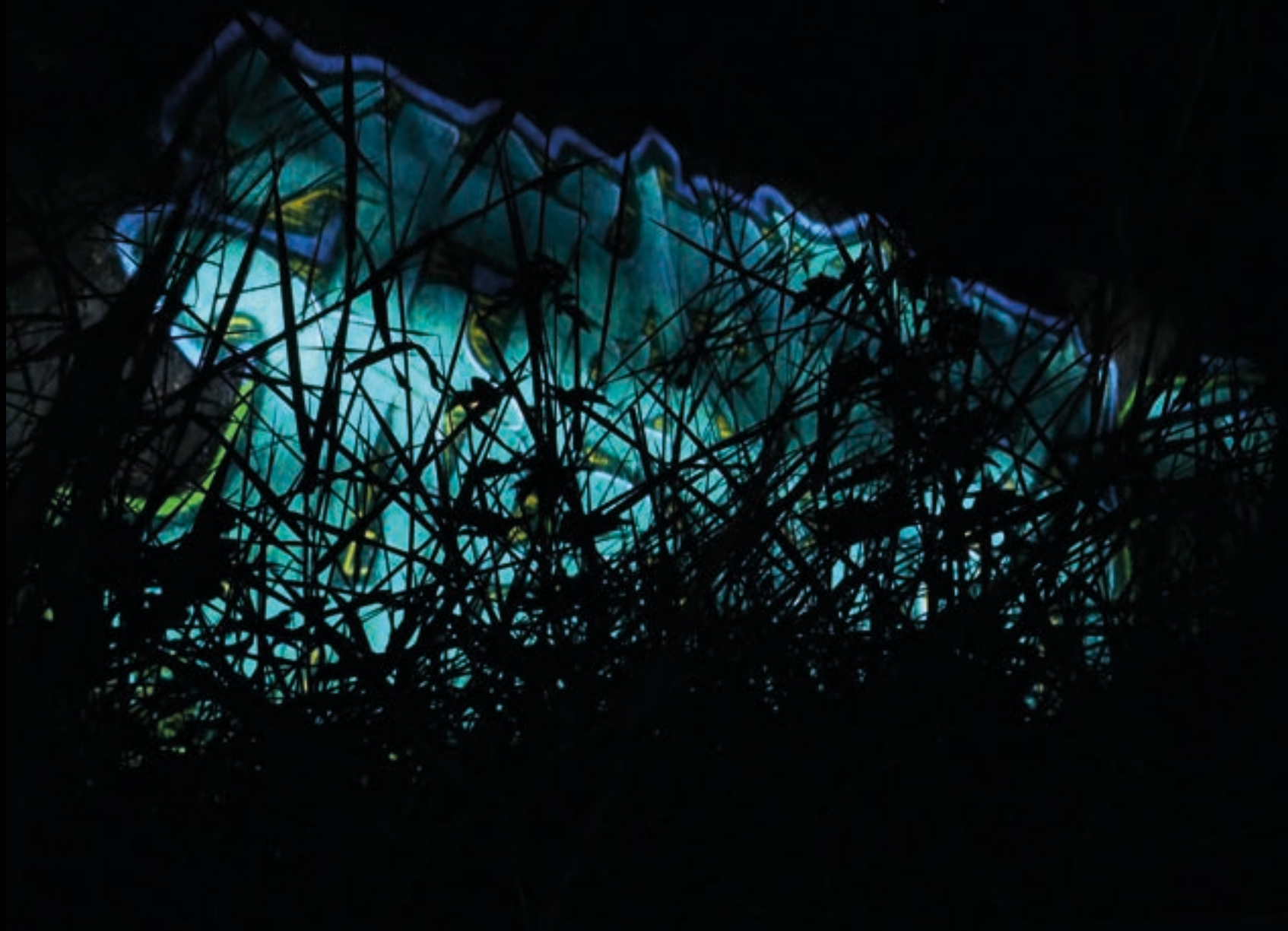
light on black artificial leather



light on grass



colored light on snow and stones



objects between



light on truck



attack



mode overlay



33 RIV
85 CH - VICEM

21180-9
27.01

9326 272-2

Uacns

A	B	C	D	E	F
42.1	46.5	50.0	65.4	68.8	
170		600%			

Espace No. 85 9326 272-2
CH-VICEM

Sito

13.54m

70000 II

2°00'

15

1000



SOLUTIONS PAR PASSION

Angier

pression des service admissible: max. 2 bar

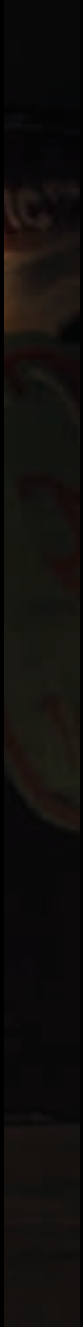
Silo 2

Freiburg-EP-A
MAX. 50 T

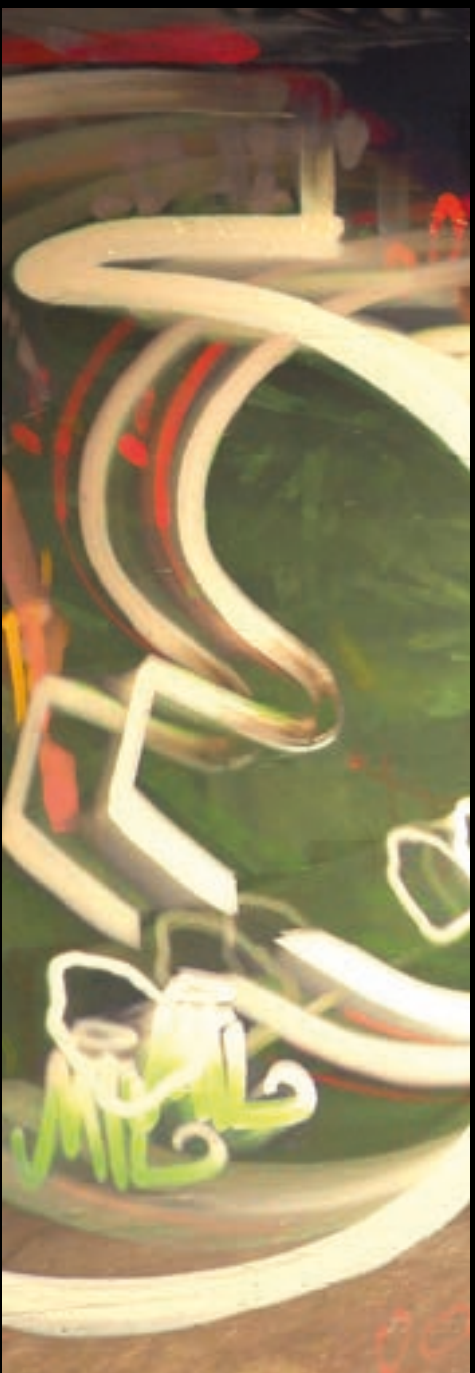
CIMENTS VIGIER
CH-2603 PERY
TEL. +41 32 485 00 00
FAX. +41 32 485 00 00
e-mail: logistique@vigier.ch

11.602
10.100





Danger City



cheers



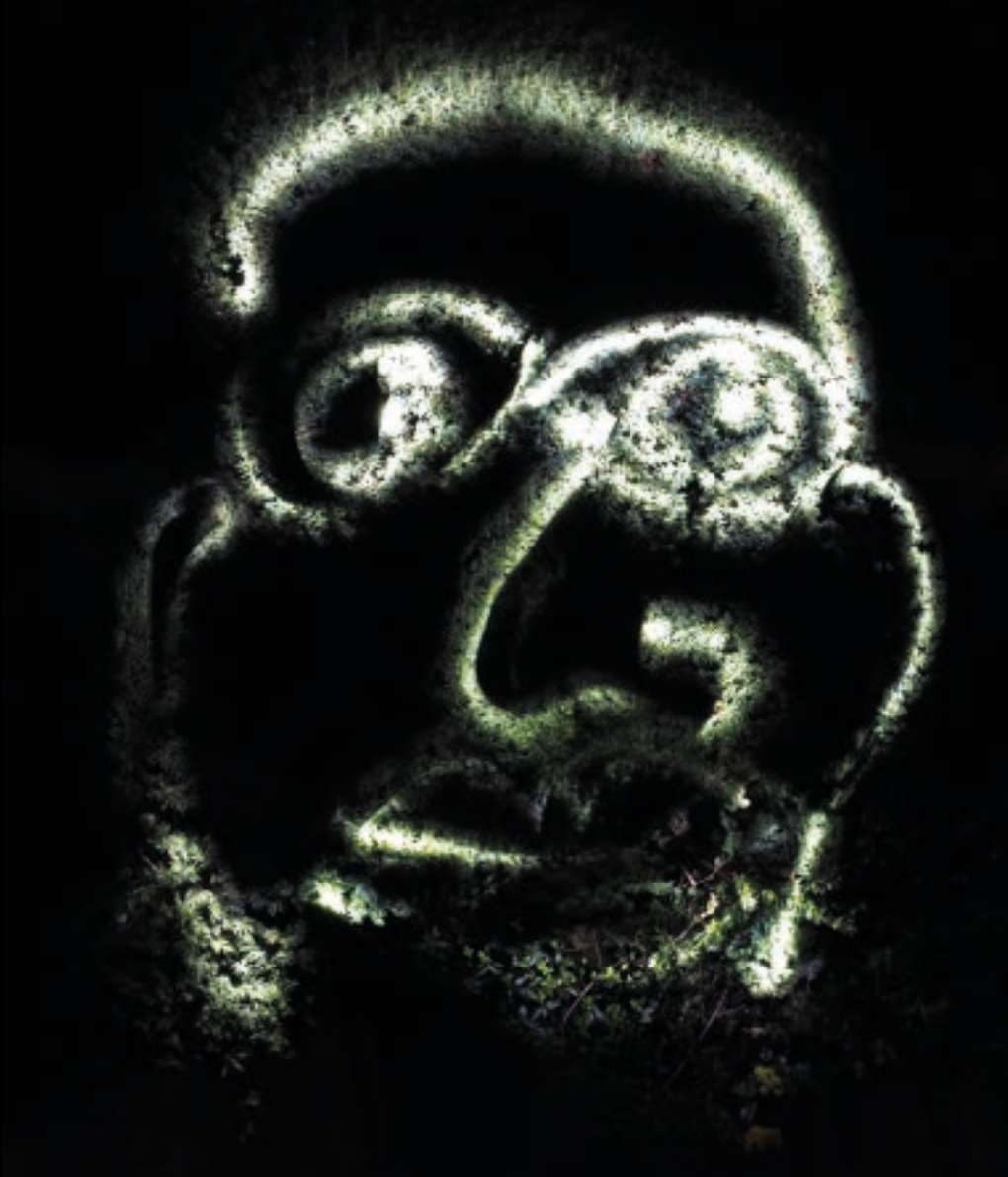


mutz 001









Mellow





20:03:30



20:04:52



20:08:08



20:18:58



20:19:47



20:42:05



20:43:35



20:47:09



20:50:41



22:06:53



22:08:25



22:14:50



22:21:25



22:28:07



22:31:43



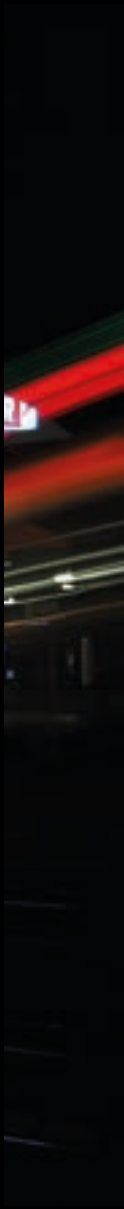
00:20:11



00:21:18



colorlight



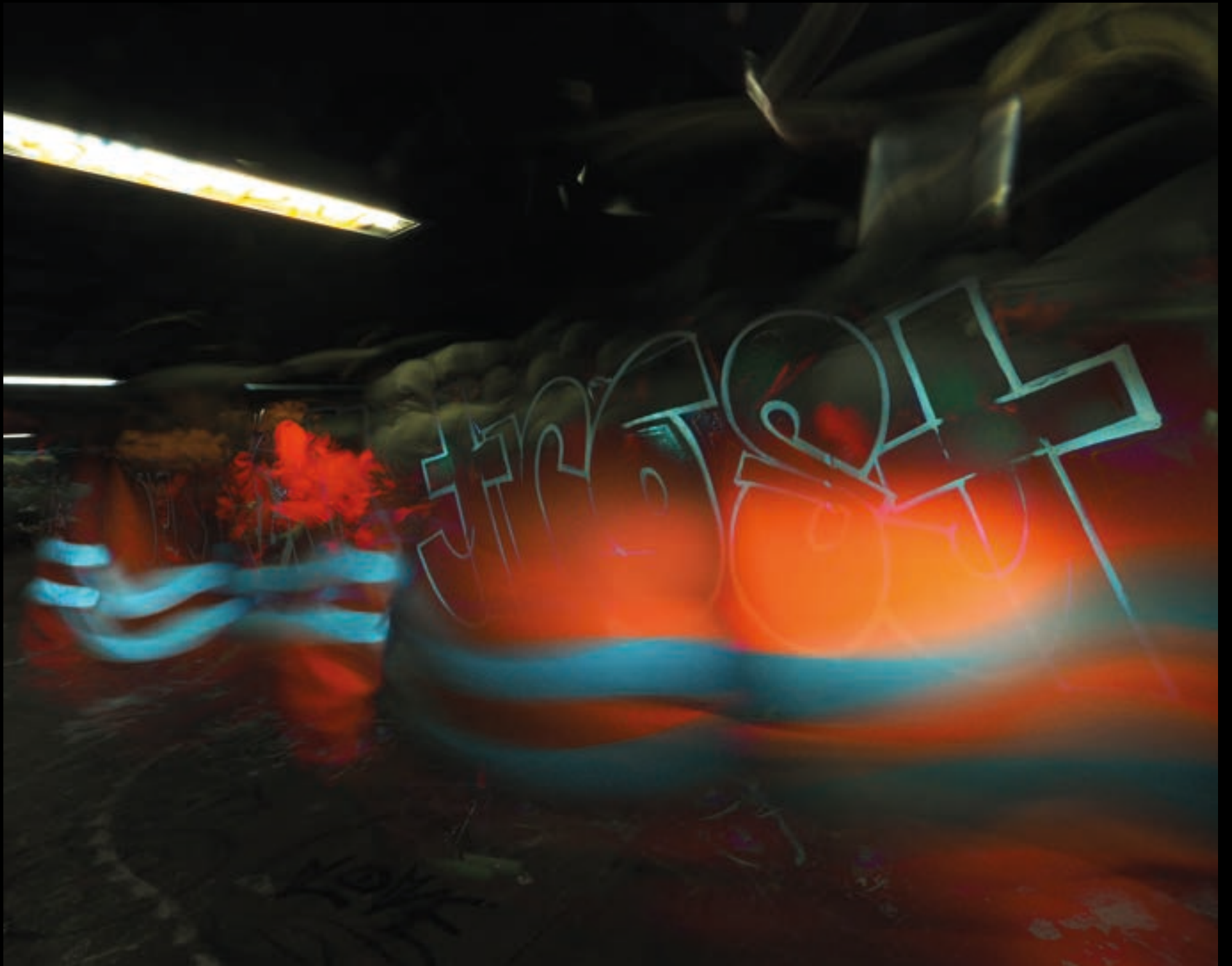
ampel auf grün



candela figure 1



candela figure 2



BRT JDN

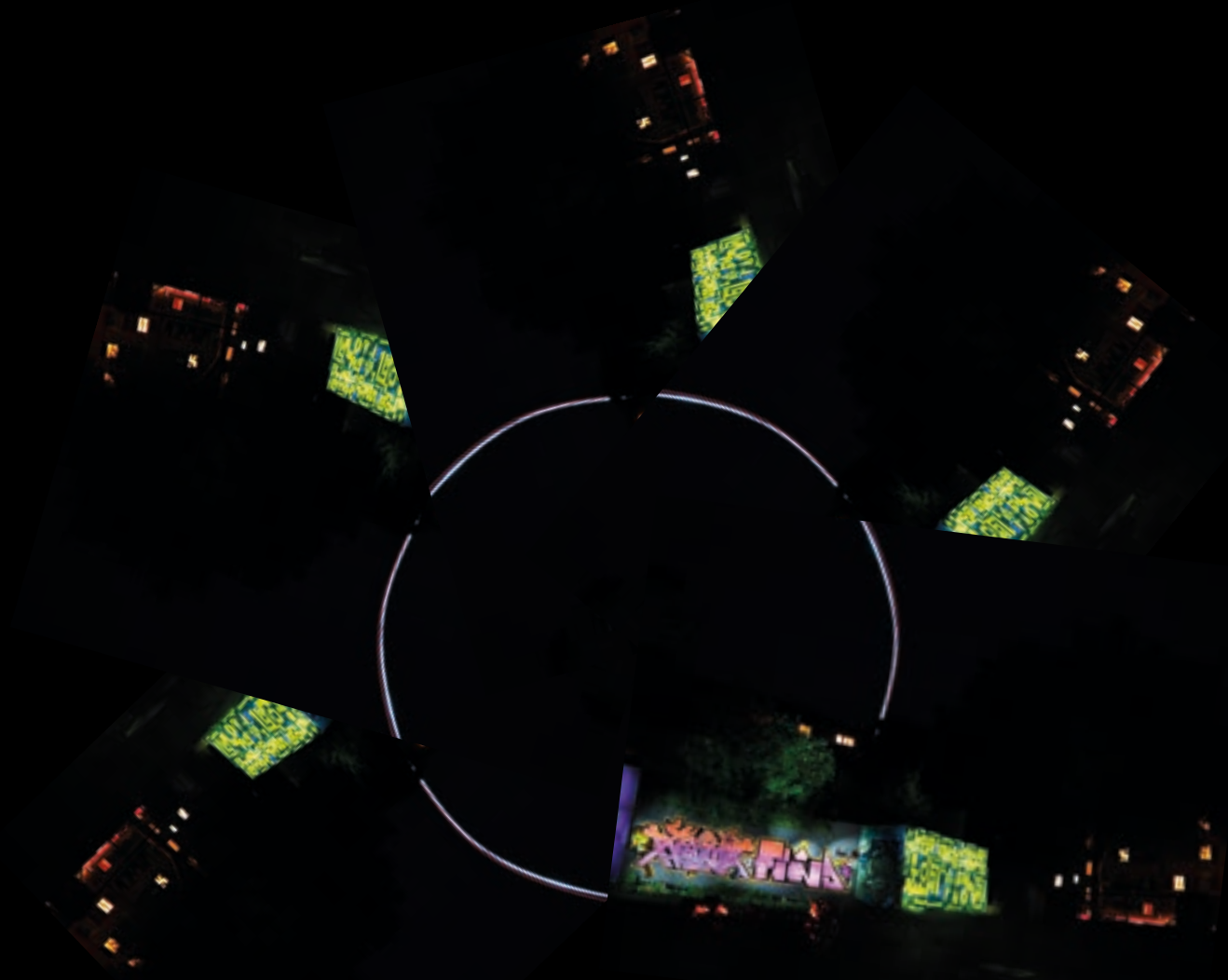




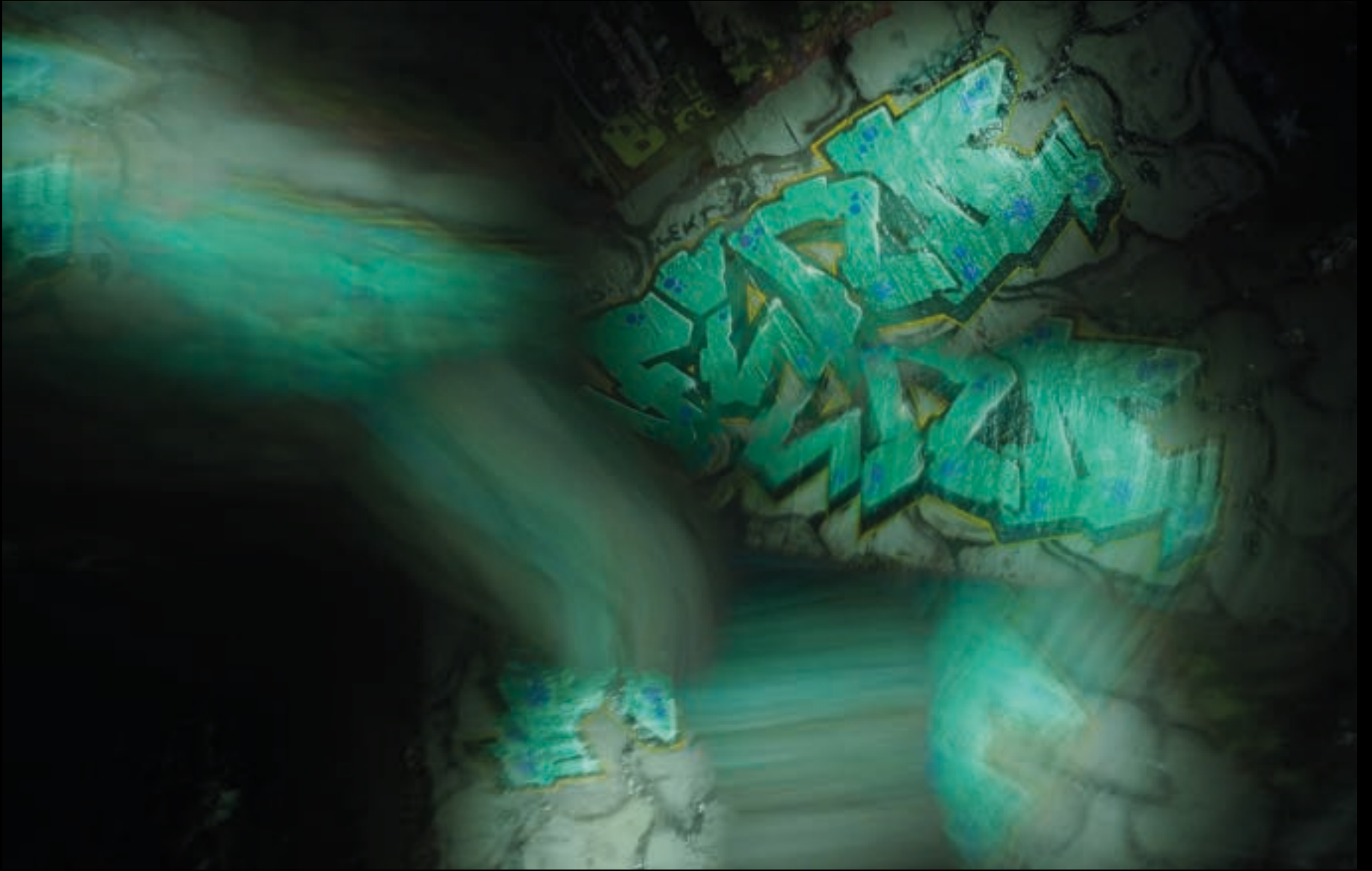
five chimneys



making of



five cards



frontflip





Avelina Luna



fernverbindung

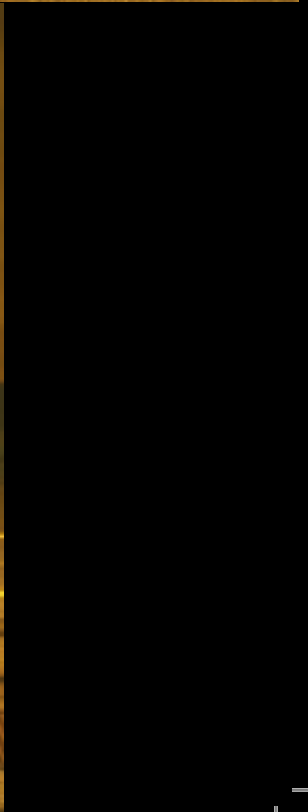
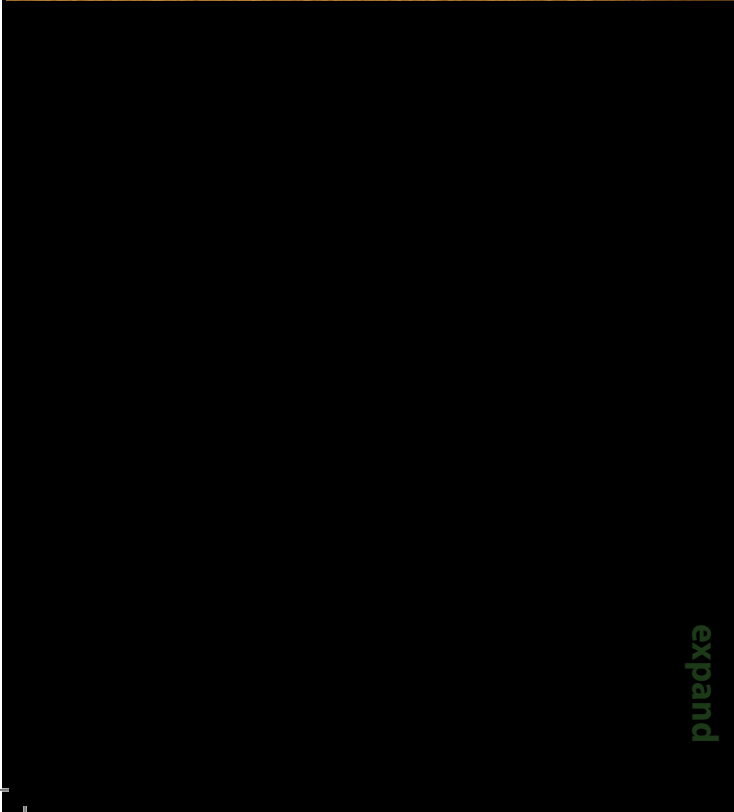
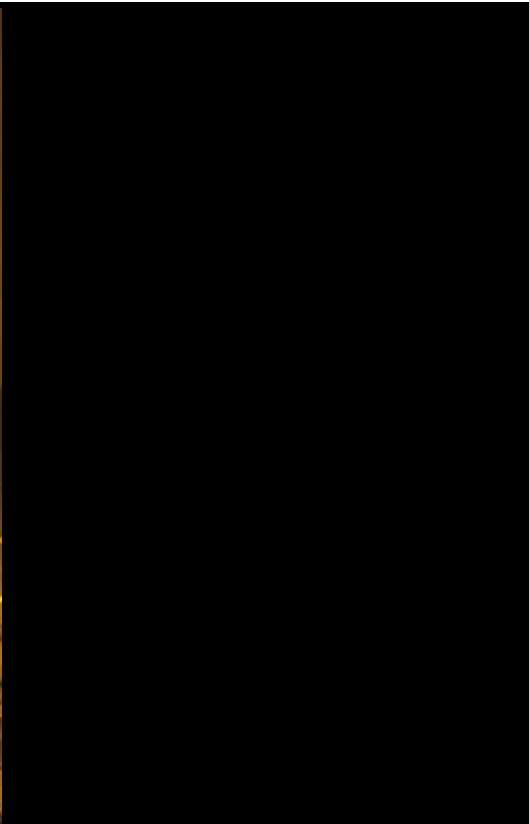
PUTTING



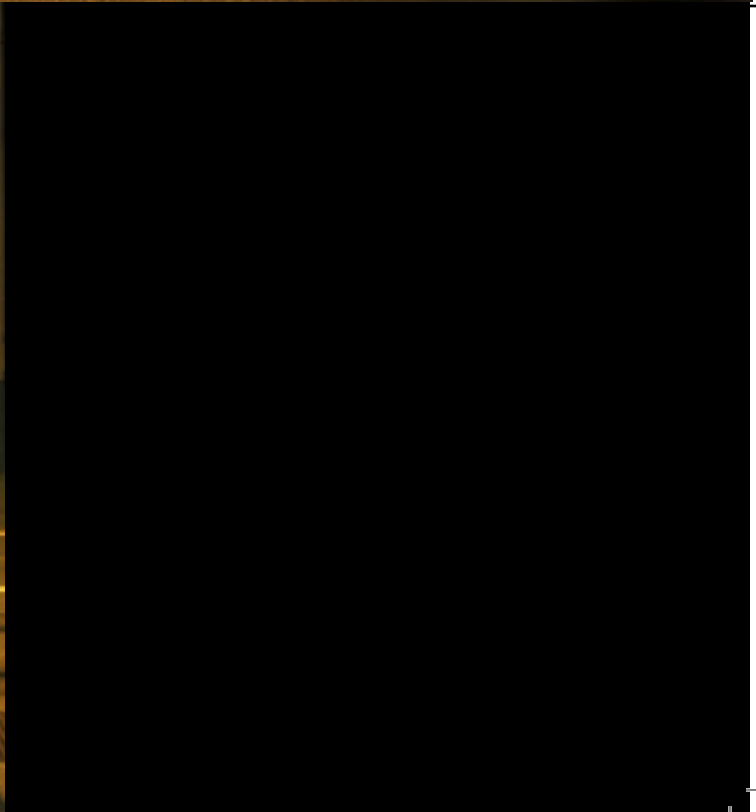


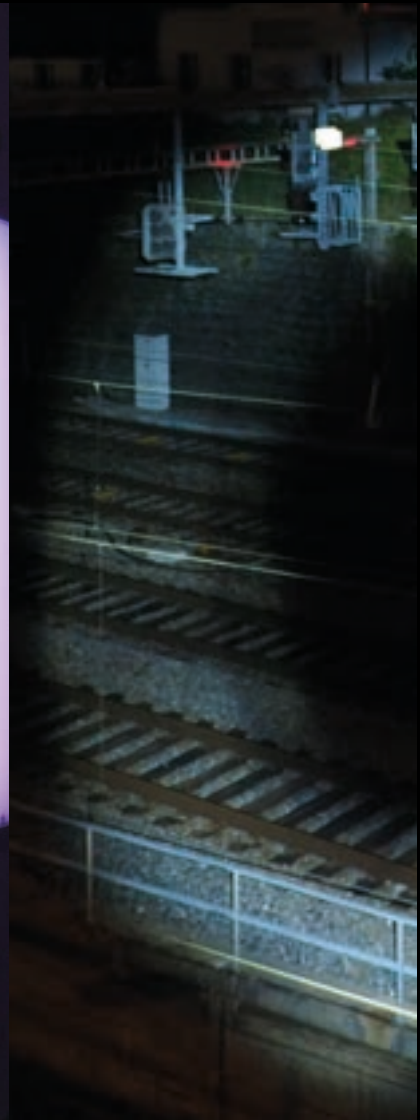
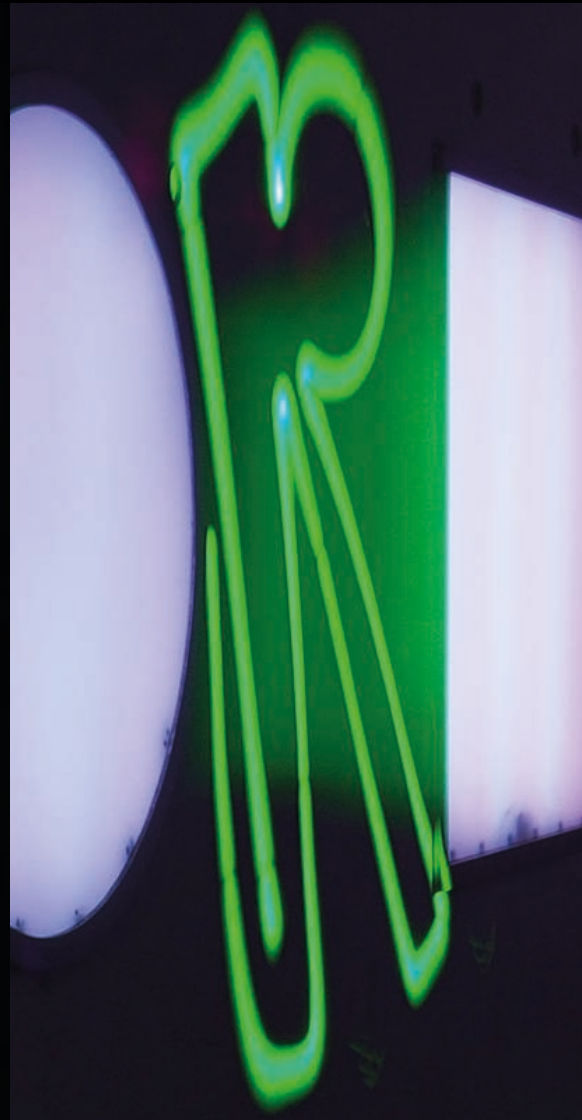
lines



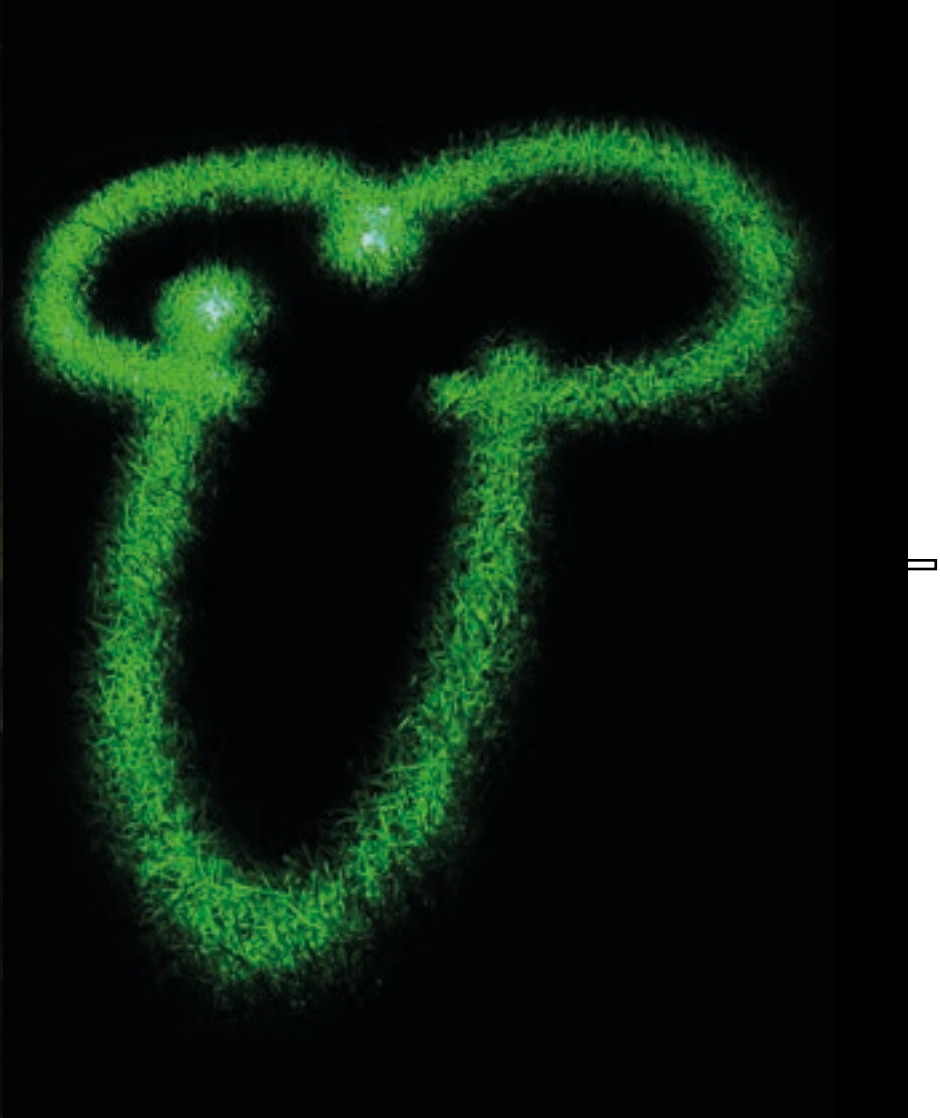
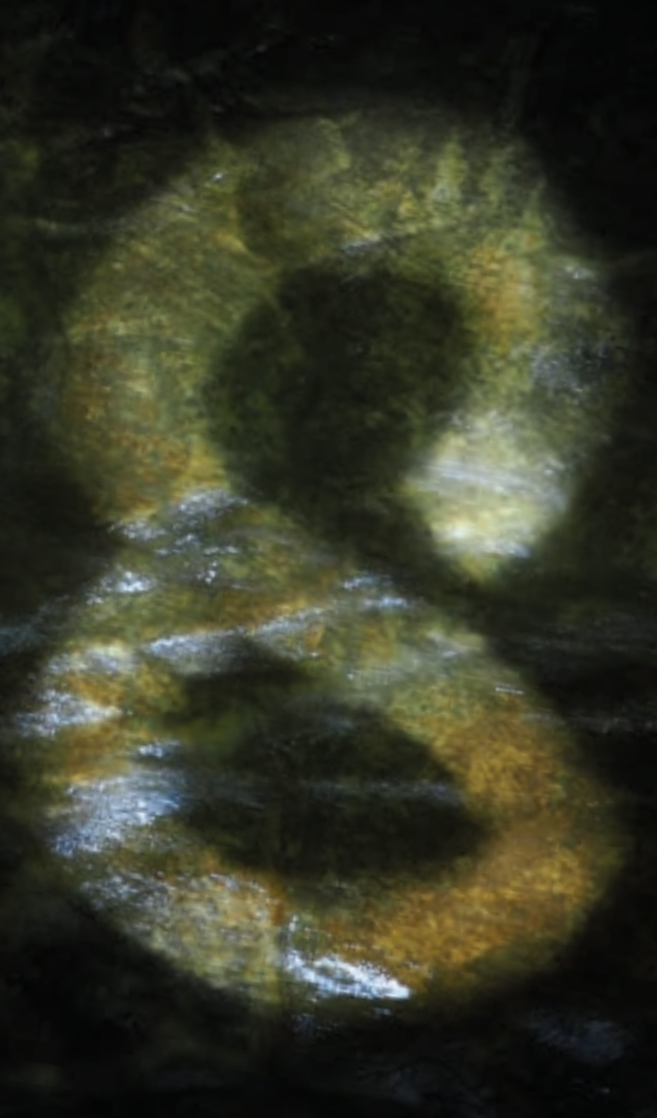


expand





T2 R O S T



official dealer



car 1, LC, 50mm, F5.6, ISO250, 0.63sec*6pics
magic window, LC, 50mm, F9, ISO250, 0.63sec*391pics
one of the last, LC, 18mm, F16, ISO250, 0.63sec *85pics
five slate, LC, 18mm, F7.1, ISO250, 0.63sec *186pics
left or right, LC, 50mm, F1.8, ISO250, 0.63sec *178pics
bus 1, LC, 18mm, F10, ISO250, 0.63sec*74pics
backjump 1, LC, 18mm, F10, ISO250, 0.63sec*487pics
fountain 1, LC, 18mm, F4, ISO100, 0.63sec*188pics
fountain 2, LC, 18mm, F13, ISO100, 0.63sec*107pics
tunnel vision 1 (character Bretty Bossi), LC, 18mm, F5.6,
ISO250, 0.63sec*1860pics

upside down, LT, 18mm, F4, ISO1250, 18.1sec
pastel lighterell, LC, 50mm, F6.3, ISO200, 0.63sec*10pics
tunnel vision 2, LC, 50mm, F9, ISO200, 0.63sec*9pics
angle, LC, 50mm, F7.1, ISO200, 0.63sec*23pics
cords, LC, 50mm, F10, ISO200, 0.63sec*7pics
coil, LC, 50mm, F10, ISO200, 0.63sec*7pics
micro, LC, 50mm, F14, ISO200, 0.63sec*17pics
macro, LC, 50mm, F18, ISO200, 0.63sec*55pics
twister, LC, 50mm, F14, ISO200, 0.63sec*7pics
tumbleweed, LC, 50mm, F14, ISO200, 0.63sec*9pics

curve, LC, 50mm, F9, ISO200, 0.63sec*5pics
strew, LC, 50mm, F9, ISO200, 0.63sec*5pics
backjump 2, LC, 50mm, F11, ISO1250, 0.5sec*26pics
backjump 3, LC, 50mm, F4, ISO250, 0.63sec*35pics
tunnel vision 3, LC, 18mm, F5.6, ISO200, 0.63sec*15pics
grid, LT, 50mm, F4, ISO250, 34.28sec
under, LC, 18mm, F14, ISO100, 0.63sec*111pics
on, LC, 18mm, F8, ISO200, 0.63sec*97pics
TGV, LC, 18mm F7.1, ISO200, 0.63sec*7pics
already gone, LC, 18mm, F9, ISO200, 0.63sec*29pics

RE 460, LC, 18mm, F9, ISO200, 0.63sec*13pics
burn away, LC, 18mm, F8, ISO200, 0.63sec*182pics
tracks, LC, 18mm, F4, ISO1250, 0.5sec*114pics
tracks zoom, LC, 18mm, F4, ISO1250, 0.5sec*227pics
freight 1 (cargo 1), LC, 18mm, F6.3, ISO250, 0.63sec*432pics
about 1.2km, LC, 18mm, F9, ISO250, 0.63sec*38pics
bistro, LC, 18mm, F22, ISO100, 0.5sec*158pics
T 1, LC, 50mm, F18, ISO1250, 0.5sec*89pics
outline, LC, 50mm, F22, ISO1250, 0.5sec*108pics
on the green, LC, 18mm, F5.6, ISO100, 0.5sec*109pics

think positive, LC, 18mm, F5.6, ISO100, 0.5sec*31pics.
fat, LC, 18mm, F6.3, ISO250, 0.63sec*146pics
ultra fat, LC, 18mm, F6.3, ISO1250, 0.5sec*151pics
mirrored mirror (Klub)(*8), LC, 18mm, F16, ISO100, 0.63sec*84pics
1 time, (Lux), LC, 18mm, F13, ISO100, 0.63sec*204pics
2 times, LC, 18mm, 0.63sec*x
3 times, LC, 18mm, 0.63sec*x
4 times, LC, 18mm, 0.63sec*x
噴水 3 (fountain 3), LC, 50mm, 0.63sec*x
fountain 4, LT, 50mm, F/10, ISO250, 59.92sec.

環状交差点 1 (roundabout 1), LC, 18mm, 0.63sec*x
roundabout 2, LC & LT, 18mm, 0.63sec*x
ドブ (creek canal), LC, 36mm, 0.5sec*x
aareorange, LC 36mm, F5.6, ISO100, 0.5sec*25pics
円, LT, 18mm, F4, ISO1250, 11.12sec
Étienne-Jules Marey, LC, 18mm, F6.3, ISO1250, 0.5sec*26pics
採石場 (quarry), LC & LT, 18mm, F6.3, ISO1250, 0.5sec*26pics,
LT: F4, ISO1250, 11.12sec
my, LC, 50mm, F1.8, ISO1250, 0.5sec*3pics
self, LC, 50mm, F22, ISO1250, 0.5sec*58pics
reflection, LC & LC, 50mm, 1: F1.8, ISO1250, 0.5sec*3pics,
2: F22, ISO1250, 0.5sec*58pics

unknown artist, LC, 50mm, F14, ISO1250, 0.5sec*34pics
青 (blue), LC, 50mm, 0.5sec*x truck 1, LC, 18mm, 0.5sec*x
パネルトラック 1 (panel truck 1), LC, 18mm, 0.5sec*x
パネルトラック 2, LC, 18mm, 0.5sec*x
highlights, LC, 18mm, F18, ISO100, 0.5sec *136pics
貨物 2 (freight 2), LC, 18mm, 0.5sec*x
keep moving, LC, 18mm, 0.5sec*x
一方通行 (one way), LC & LT, 18mm, LT: 0.5sec*x, LC: 10.7sec
出口 (exit), LC, 18mm, 0.5sec*x
turnstile, LC, 18mm, 0.5sec*x

colored stars, LC & LT, 18mm, LC: 0.5sec*x, LT: 14.28sec
siding, LC, 18mm, 0.63sec*x
貨物駅 (freight depot), LC, 18mm, 0.5sec*x
木材輸送 (wood transportation), LC & LT, 18mm, LC: 0.5sec*x, LT: 112.52sec
wood express, LT, 18mm, F8, ISO100, 68.64sec
eat currywurst, LC, 18mm, 0.5sec*x
シマウマ (zebra), LC, 18mm, 0.5sec*x
tag 1, LC & LT, 18mm, LC: 0.5sec*x, LT: 20.44sec
colors, LC, 50mm, ground (4*), F7.1, ISO250, 0.63sec*x, w: 290pics, b: 332pics,
g: 130pics, r: 323pics
色 (color), LC, 50mm, 0.63sec*x

Albert Einstein (*4), LC, 24mm, 0.5sec*x

bright IO, LC, 18mm, 0.5sec*x

都市鉄道 (urban railway), LC, F10, ISO100, 0.63sec*198pics

der Kurs ist vorherbestimmt, LC, 18mm, 0.63sec*x

花 (flower), LC, 18mm, 0.5sec*x

Line, LC, 36mm, 0.5sec*x

form, LC, 18mm, 0.63sec*x

日の出 (sunrise), LC, 18mm, 0.63sec*x

El Gustavo, LC, 18mm, 0.63sec*x

鋼カラフル (colorfull steel) (*7*4) , LC, 18mm, 0.5sec*x

french steel, LC, 18mm, 0.5sec*x

世界への扉 (door to the world) (*8), LC, 36mm, 0.5sec*x

german steel, LC, 36mm, 0.5sec*x

redy, LC, 18mm, 0.63sec*x

back jump 4, LC, 18mm, 0.63sec*x

back jump 5, LC, 18mm, 0.63sec*x

鋼緑 (green steel), LC & LT, 18mm, LC: 0.63sec, LT: 33.16sec

feel free (Pavillon), LC, 18mm, 0.63sec*x

バス停 (bus station), LC, 28mm, 0.5sec*x

so, LC, 18mm, 0.63sec*x

or so, LC, 18mm, 0.63sec*x

水平に (horizontal), LC, 50mm, 0.63sec*x

the three, LC, 50mm, 0.63sec*x

alone, LC & LT, 18mm, LC: 0.5sec*x, LT: 20.36sec

not, LC, 18mm, 0.5sec*x

こんにちは (Hello), LC, 18mm, 0.5sec*x

Bern, LC, 18mm, F5.6, ISO200, 0.63sec*5pics

expanse 1, LC, 18-36mm, F4, ISO200, 0.63sec*25pics

voilà (here), LC, 18-36mm, F4.5, ISO250, 0.63sec*208pics

architektur 1 (archictectur), LC, 18mm, F5, ISO250, 0.63sec*97pics

second floor, LC, 18-36mm, F5.6, ISO250, 0.63sec*217pics

ecke (edge), LC, 18-36mm, F4.5, ISO250, 0.63sec*137pics

shifting, LC, 18-36mm, F22, ISO250, 0.63sec*16pics

marginal, LC, 18-36mm, F18, ISO250, 0.63sec*50pics

through the space, LC, 18-36mm, 0.63sec*x

can you see the beat, Klub, LC, 18mm, F13, ISO100, 0.63sec*116pics

grotesk (sans serif), popart, LC, 18-36mm, F22, ISO1250, 0.5sec*412pics

always brighter, pa, LT, 18-36mm, F22, ISO1250, 176.4sec

only the brightest, pa, LC, 18-36mm, F22, ISO1250, 0.5sec*287pics

silver, LC, 18-36mm, pa, F22, ISO1250, 0.5sec*459pics

fase (bevelled edge), pa, LC, 18-36mm, F22, ISO1250, 0.5sec*605pics

figure 1, pa, LC, 18-36mm, F22, ISO1250, 0.5sec*335pics

4*, pa, 18-36mm, F22, ISO1250, 0.5sec*335pics

zwirbel (swirl), pa, LC, 150mm, b: F11, ISO1250, 0.5sec*41pics, g: F13, ISO1250, 0.5sec*23pics

2*, pa, LC, 18-36mm, F22, ISO1250, 0.5sec*172pics

steradiant, pa, LC, 18-36mm, F22, ISO1250, 0.5sec*108pics

tunnel vision 3, pa, LT, 18-36mm, F22, ISO1250, 19.1sec

tunnel vision 4, pa, LC, 18-36mm, F22, ISO1250, 0.5sec*188pics

blauer sand (blue sand), pa, LC F22, ISO1250, 0.5sec*190pics

nachtschattengewächs (solanaceous), pa, LT, 150-600mm, F22, ISO1250, 153.2sec

fallend (falling), pa, LC, 18-36mm, F22, ISO1250, 0.5sec*96pics

ineinandergreifend (interlocking), pa, 18-36mm, LC, F22, ISO1250, 0.5sec*78pics

yo, pa, LC, 18-36mm, F5.6, ISO1250, 0.5sec*173pics

Chrigu, pa, LT, 18-36mm, F4, ISO1250, 25.2sec

lift, LC, 18-36mm, F20, ISO1250, 0.5sec*83pics

chalet, LC, 18-36mm, F5.6, ISO250, 0.63sec*10pics

street, LC, 18-36mm, F9, ISO250, 0.63sec*8pics

radius 1, LC, 18mm, F9, ISO250, 0.63sec*32pics

radius 2 LC, 18-36mm, F5.6, ISO1250, 0.5sec*33pics

radius 3, LC, 18-36mm, F5.2, ISO1250, 0.5sec*16pics

expanse 2, LC, 450-600mm, F8, ISO1250, 0.5sec*29pics

physik (physics), LC, 600mm, F8, ISO1250, 0.5sec*5pics

säulen (columns), LC, 18-36mm, F11, ISO1250, 0.63sec*22pics

brennweite (focal length), LC, 300-600mm, F22, ISO1250, 0.63sec*471pics

free hugs, LC, 18-36mm, F6.3, ISO250, 0.63sec*22pics

u, LC, 18-32mm, 0.63sec*x

jungs von den treppen (guys from the stairs), LC, 18-36mm, 0.5sec*x

expanse 3, LC, 18-36mm, F5.6, ISO1250, 0.5sec*6pics

expanse 4, LC, 18-36mm, F5.6, ISO1250, 0.5sec*14pics

einrad (unicycle), LC, 36mm, F13, ISO1250, 0.5sec*60pics

tritt (step), LC, 36mm, F13, ISO1250, 0.5sec*32pics

a train long, LC, 18mm, F5.6, ISO1250, 0.63sec*9pics

outwards, LC, 36mm, F7.1, ISO250, 0.63sec*11pics

zoom fern (far), LC, 150-600mm, F22, ISO250, 0.5sec*6pics

zoom nah (near), LC, 150-600mm, F20, ISO1250, 0.5sec*50pics

rush hour, LC, 36mm, F11, ISO100, 0.63sec*68pics

points and lines, LC, 18-36mm, F18/ F20, ISO1250, 0.63sec*x, 11pics/ 16pics

truck 3, LC, 18-36mm, F5.6, ISO1250, 0.5sec*12pics

farbwerk (colorworks), LC, 18-36mm, F5.6, ISO1250, 0.5sec*8pics

hall of fame, LC & LT, 18mm, 0.5sec*x, LT: 23.5sec

my first Live Time, 28mm, F6.3, ISO1000, 20sec
LT 2, 28mm, F6.3, ISO1000, 5sec
LT 3, 28mm, F22, ISO1000, 25sec
my first Life Composite, 28mm, F6.3, ISO1000, 0.5sec*68pics
LC 2, 28mm, F3.5, ISO1000, 0.5sec*x123pics
LC 3, 28mm, F3.5, ISO1000, 0.5sec*191pics
1lighter lux*x, LC, 28mm, F3.5, ISO800, 0.5sec*57pics
light reflections direction camera, LC, 28mm, F3.5, ISO250, 0.5sec*924pics
entrane angle equal to exit angle, LC, 28mm, F13, ISO200, 0.5sec*57pics
colorful by light, LC, 28mm, F9, ISO200, 0.5sec*168pics

much light on wall, LC, 28mm, F20, ISO200, 0.5sec*2559pics
3 times green, LC, 18mm, F9, ISO200, 0.5sec*348pics
no light no lux, LC, 24mm, F7.1, ISO640, 0.63sec*677pics
gaskessel (gas storage), LC, 24mm, F7.1, ISO640, 0.63sec*201pics
exit angle, LC, 28mm, F3.5, ISO200, 0.5sec*821pics
light on black artificial leather (Cubitus D.), LC, 28mm, F6.3, ISO200, 0.5sec*176pics
light on grass, LC, 18mm, F11, ISO1250, 0.63sec*967pics
colored light on snow and stones, LC, 36mm, F7.1, ISO250, 0.63sec*511pics
objects between, LC, 36mm, F16, ISO1250, 0.5sec*175pics
light on truck, LC, 50mm, F7.1, ISO320, 0.63sec*142pics

attack, LC, 18mm, F5, ISO200, 0.63sec*131pics
overlay, (my first 時間), LC, 18mm, 0.63sec*x
to train, LC, 50mm, F5, ISO250, 0.63sec*1450pics
Danger City, LC, 18mm, F4, ISO250, 0.5sec*81pics
cheers, (my first むさ), LC, 18-36mm, F8, ISO640, 0.63sec*17pics
mutz 001, LC, 18mm, 0.63sec*x
expanse 5, LC, 18-36mm, F6.3, ISO250, 0.63sec*26pics
S1, LC, 18mm, F14, ISO100, 0.63sec*290pics
S2, LC, 18mm, 1/3: F13, ISO1250, 0.5sec*25pics, 2: 18mm,
LC: 0.5sec*x, LT: 11sec
Mellow, LC, 26mm, F20, ISO100, 0.63sec*94pics

peeace, LC, 18mm, F4, ISO250, 0.63sec*117pics
20:03:30, LC, 18mm, F6.3, ISO200, 0.63sec*10pics
20:04:52, LC, 18mm, F4, ISO200, 0.63sec*185pics
20:08:08, LC, 18mm, F4, ISO200, 0.63sec*163pics
20:18:58, LC, 18mm, F5, ISO200, 0.63sec*35pics
20:19:47, LC, 18mm, F4, ISO200, 0.63sec*35pics
20:42:05, LC, 18mm, F4, ISO250, 0.63sec*31pics
20:43:35, LC, 18mm, F5, ISO250, 0.63sec*150pics
20:47:09, LC, 18mm, F5.6, ISO250, 0.63sec*170pics
20:50:41, LC, 18-36mm, F5.6, ISO250, 0.63sec*82pics

22:06:53, LC, 18mm, F4, ISO250, 0.63sec*121pics
22:08:25, LC, 18mm, F4, ISO250, 0.63sec*97pics
22:14:50, LC, 20mm, F5, ISO250, 0.63sec*326pics
22:21:25, LC, 18mm, F5, ISO250, 0.63sec*346pics
22:28:07, LC, 18mm, F6.3, ISO250, 0.63sec*10pics
22:31:43, LC, 18mm, F6.3, ISO250, 0.63sec*75pics
00:20:11, LC, 36mm, F6.3, ISO250, 0.63sec*61pics
00:21:18, LC, 18-36mm, F6.3, ISO250, 0.63sec*7pics
color light, LC, 18-36mm, F20, ISO250, 0.63sec*11pics
ampel auf grün (traffic light on green), LC, 150mm, F5.6, ISO1250, 0.5sec*3pics

candela figure 1, LC, 34mm, F18, ISO250, 0.63sec*44pics
candela figure 2, LC, 456mm, F20, ISO1250, 0.5sec*141pics
BRT JDN, LC, 18mm, F20, ISO640, 0.63sec*322pics
ASIX, LC, 18-36mm, F18, ISO1250, 0.63sec*8pics
five chimney, LC, 18mm, 0.5sec*x
making of, LC, 18mm, F22, ISO1250, 0.5sec*262pics
five cards, LC, 28mm, F3.5, ISO200, 0.63sec*1496pics
frontflip (FIND), LC, 22mm, F10, ISO1250, 0.63sec*15pics
Avelina Luna (Cubitus Duppa), LC, 18mm, F10, ISO200, 0.5sec*66pics
fernverbindung, LC, 20mm, F4.2, ISO250, 0.63sec*73pics

turn, LC, 18mm, 0.63sec*x
lines, LC, 50mm, 0.5sec*x
expand T, LC, 50mm, 0.5sec*x
expand TR, LC, 50mm, 0.5sec*x
expand TRO, LC, 50mm, 0.5sec*x
expand TROS, LC, 50mm, 0.5sec*x
expand TROST, LC, 50mm, 0.5sec*x
T 2, LC, 18mm, F6.3, ISO250, 0.63sec*127pics
R, LC, 18mm, F22, ISO250, 0.63sec*90pics
O, LC, 18mm, F4, ISO1250, 0.5sec*24pics

S, LC, 36mm, F5.6, ISO100, 0.5sec*x
T, LC, 18mm, F5.6, ISO100, 0.5sec*28pics
trash, LC, 50mm, 0.5sec*x

LC: Live Composite, LT: Live Time

M.ZUIKO DIGITAL ED 9-18mm 1:4.0-5.6 (18-36mm)
M.ZUIKO DIGITAL ED 14-42mm 1:3.5-5.6 EZ PANCAKE (28-84mm)
M.ZUIKO DIGITAL 25mm 1:1.8 (50mm)
M.ZUIKO DIGITAL ED 75-300mm 1:4.8-6.7 II (150-600mm)
OM-D E-M5 Mark II Titanium 2076



publisher: trost.one

contact: info@trost.one

Myriad Pro / Kozuka Gothic Pr6N

Bern 2018

© Copyright. All Rights Reserved



trash

Lux時間mu6Я

sunlight is not required